



**HOLDING
STRONG
SINCE
1941**



P R O D U C T C A T A L O G



**MADE WITH PASSION.
MADE TO LAST.**

80 YEARS OF QUALITY HAS BEEN BUILT INTO EVERY PRODUCT

When WILTON® created the first bullet-design machinist vise in 1941, they established a standard of quality, durability and craftsmanship that remains unparalleled in the industry today. Each WILTON vise is every inch a workhorse, and they have become a staple for any workshop—beginners and experienced professionals alike.

**AND THE REST IS
TRULY HISTORY.**



HOLDING STRONG SINCE 1941

COMPARISON CHART



	COMBO PIPE & BENCH	MACHINIST	TRADESMAN	MECHANICS PRO	MECHANICS
SIZE & MASS					
MOVABLE JAW STABILITY	BEST MACHINED SLIDE BAR	BEST MACHINED SLIDE BAR	BEST MACHINED SLIDE BAR	BEST MACHINED SLIDE BAR	BETTER SQUARE TUBE SLIDE BAR
SPINDLE PROTECTION	BEST ENCLOSED	BEST ENCLOSED	BEST ENCLOSED	BEST ENCLOSED	BEST ENCLOSED
PIPE JAWS	BEST REPLACEABLE	—	BEST REPLACEABLE	BEST REPLACEABLE	BEST REPLACEABLE
PRICE	\$\$\$\$\$	\$\$\$\$\$	\$\$\$\$	\$\$\$\$	\$\$\$

WILTON BENCH VISES WILL PROVIDE THE WORKHOLDING FORCE YOU NEED TO GET THE JOB DONE RIGHT, TIME AFTER TIME.

Our breadth of line is as diverse as it is extensive, covering every application you will ever encounter. Use this comparison chart to find the right vise for your shop.



SPECIALITY VISES	
REVERSIBLE	MULTI-PURPOSE
GOOD BENT RAIL SLIDE BAR	BEST MACHINED SLIDE BAR
GOOD OPEN	GOOD OPEN
GOOD CAST IN	BEST REPLACEABLE
\$\$\$	\$\$\$

SHOP	UTILITY HD	UTILITY	GENERAL PURPOSE
BEST MACHINED SLIDE BAR	GOOD BENT RAIL SLIDE BAR	GOOD BENT RAIL SLIDE BAR	BETTER MACHINED TOP SLIDE BAR
GOOD OPEN	GOOD OPEN	GOOD OPEN	GOOD OPEN
GOOD CAST IN	GOOD CAST IN	GOOD CAST IN	—
\$\$	\$\$\$	\$\$	\$

WILTON® BULLET VISES ARE MADE TO LAST

We're constantly looking for ways to improve our bullet vise, but we'll never sacrifice the best-in-class quality and integrity that defines the WILTON name. We build our vises to stay incredibly durable over decades of intense use—they're almost impossible to break. The Combo Pipe & Bench and Machinist Bullet vises are still proudly built in the USA.

COMBO PIPE & BENCH
PAGE 10

MACHINIST
PAGE 11

TRADESMAN
PAGE 12

TRADESMAN XC
PAGE 14

BULLET VISES



THE BULLET VISE ADVANTAGE

DURABILITY

A FULLY ENCLOSED DESIGN

- Extends the life of the vise by protecting all internal components and keeping out dust and debris; lifetime lubricated and permanently sealed for trouble-free service

B VIRTUALLY INDESTRUCTIBLE

- **Combo & Machinist Vises:** Massive cast iron vise body is virtually indestructible, weighing up to 30% more than competing models
- **Tradesman Vises:** 60,000 PSI ductile iron body, jaw and base is virtually indestructible with 2X the strength of grey cast iron

C PRECISION SLIDE BAR

- Keyed for a .003" fit, eliminating movement in the front jaw regardless of opened distance

FUNCTIONALITY

D LONGER SPINDLE NUT

- 3X longer and 2X thicker, ensures a lifetime of smooth spindle movement and straight-line pull

E LARGER ANVIL

- 2X larger than the average anvil; designed to take a beating while forming and shaping materials

F 4-BOLT MOUNTING PATTERN

- Sturdier than the industry-average 3-bolt pattern, maximizing stability during use



FULLY ENCLOSED DESIGN



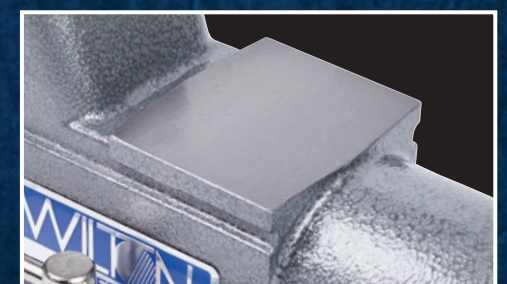
PRECISION SLIDE BAR



LONGER SPINDLE NUT

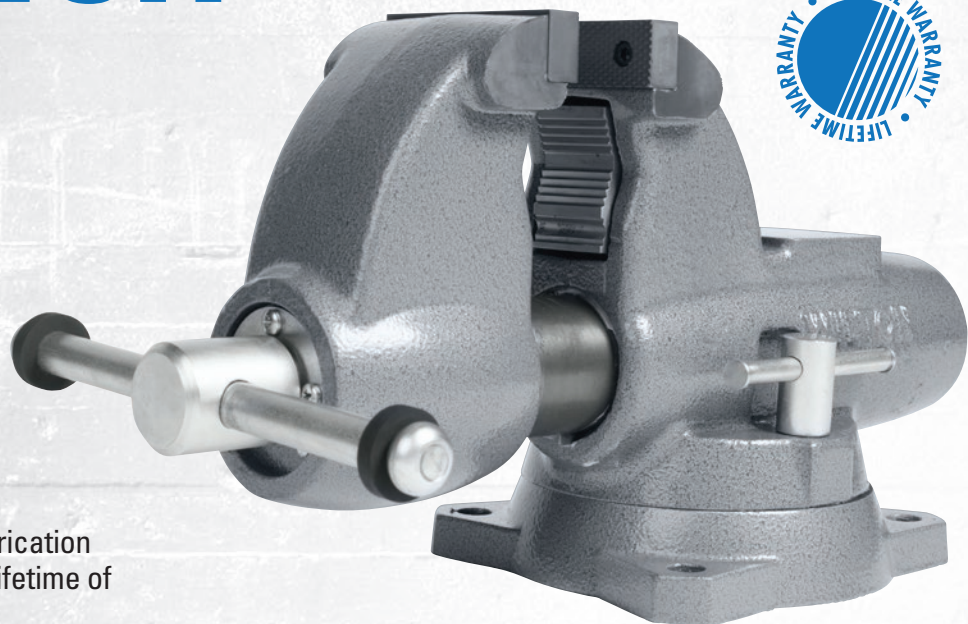


4-BOLT MOUNTING PATTERN



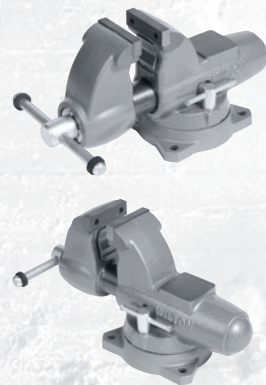
LARGER ANVIL

COMBO PIPE & BENCH VISES



FEATURES

- Massive cast iron vise body is virtually indestructible, weighing up to 30% more than competing models
- Sealed construction keeps lubrication in and contaminants out for a lifetime of smooth operation
- Precision slide bar eliminates movement in the front jaw regardless of opened distance
- Longer spindle nut ensures smooth movement and a stronger straight-line pull
- Hardened steel replaceable jaw inserts are machine serrated for a safe and secure grip under maximum torque
- Replaceable steel pipe jaws hold up to 6" pipe safely and securely
- Large anvil designed to take a beating while forming and shaping materials
- Locking swivel base with double lockdowns for non-slip hold in any position



IDEAL USE

- Heavy Construction
- Mechanical Trades
- Oil Field Service
- Plant Maintenance
- Steel Fabrication

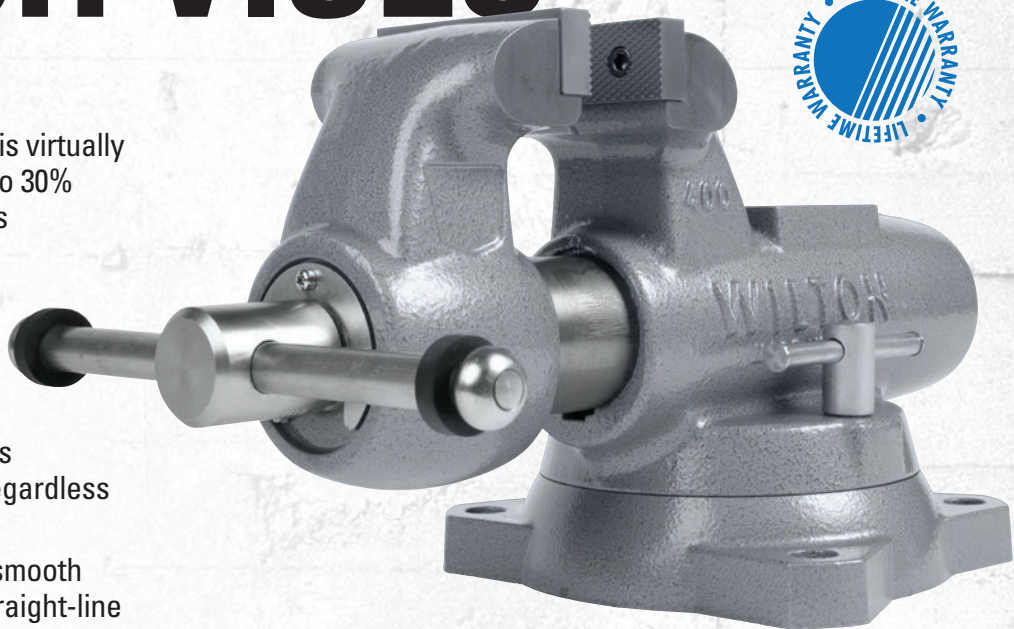
SPECS

STOCK NO.	MODEL NO.	JAW WIDTH (in.)	MAX. JAW OPENING (in.)	THROAT DEPTH (in.)	PIPE JAW CAPACITY (in.)	NET WEIGHT (lbs.)
28825	C-0	3-1/2	5	4-1/2	1/8 – 2 1/2	51
28826	C-1	4-1/2	6	4-3/4	1/8 – 3 1/2	78
28827	C-2	5	7	5-5/16	1/8 – 4 1/2	100
28828	C-3	6	9	6-5/8	1/4 – 6	204

REPLACEMENT JAWS

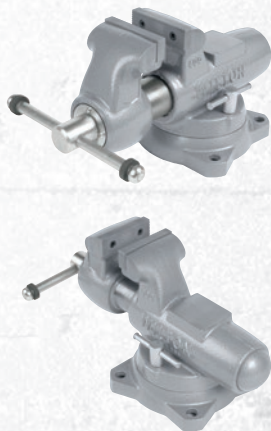
WISE STOCK NO.	REPLACEMENT JAW INSERT SET NO.	REPLACEMENT PIPE JAW INSERT SET NO.
28825	2904960	2908050
28826	2905000	2900770
28827	2903240	2900830
28828	2907370	2907600

MACHINIST BENCH VISES



FEATURES

- Massive cast iron vise body is virtually indestructible, weighing up to 30% more than competing models
- Sealed construction keeps lubrication in and contaminants out for a lifetime of smooth operation
- Precision slide bar eliminates movement in the front jaw regardless of opened distance
- Longer spindle nut ensures smooth movement and a stronger straight-line pull
- Hardened steel replaceable jaw inserts are machine serrated for a safe and secure grip under maximum torque
- Large anvil designed to take a beating while forming and shaping materials
- Locking swivel base with double lockdowns for non-slip hold in any position



IDEAL USE

- Machine Shops
- Maintenance and Repair
- Metal Fabrication

SPECS

STOCK NO.	MODEL NO.	JAW WIDTH (in.)	JAW OPENING (in.)	THROAT DEPTH (in.)	NET WEIGHT (lbs.)
SWIVEL BASE					
28830	300S	3	4-3/4	2-5/8	30
28831	400S	4	6-1/2	3-1/2	62
28832	500S	5	8	4-1/4	96
28833	600S	6	10	5-1/2	156
28834*	800S	8	12	5-13/16	238
STATIONARY BASE					
28839*	800N	8	12	5-13/16	218

REPLACEMENT JAWS

STOCK NO.	REPLACEMENT JAW INSERT SET NO.
SWIVEL BASE	
28830	2903080
28831	2904980
28832	2905020
28833	2903280
28834	2904940
STATIONARY BASE	
28839	2904940

*CONTACT DISTRIBUTOR OR CHECK WILTONTOOLS.COM FOR AVAILABILITY

TRADESMAN BENCH VISES

#1
SELLING
VISE
TAA
COMPLIANT



SPECS

STOCK NO.	MODEL NO.	JAW WIDTH (in.)	MAX. JAW OPENING (in.)	THROAT DEPTH (in.)	PIPE JAW CAPACITY (in.)	NET WEIGHT (lbs.)
28805	1745	4-1/2	3-1/2	3-1/4	1/4 – 2-1/2	38.3
28806	1755	5-1/2	5	3-3/4	1/4 – 3	46.8
28807	1765	6-1/2	6	4	1/4 – 3-1/2	64.3
28808	1780A	8	6-3/4	4-3/4	1/8 – 3-1/2	95.0

The Tradesman Bullet vise is WILTON's #1 selling bench vise and is designed to handle your toughest jobs. Unlike most vises that have a fixed center nut, the Tradesman spindle nut is anchored at the rear. This decreases backlash and increases clamping force while significantly increasing product life. The round channel design allows for a completely enclosed spindle assembly, keeping debris out and lubrication in for a lifetime of smooth operation. For ultimate versatility, the Tradesman vise is equipped with replaceable serrated jaw inserts, pipe jaws and a machined striking anvil.

FEATURES

- Enclosed design keeps lubrication in and contaminants out for a lifetime of smooth operation
- Redesigned spindle assembly improves overall product life and durability
- Precision slide bar eliminates movement in the front jaw regardless of opened distance
- Machined steel serrated jaws with phosphate coating provide increased durability and an extended life of use
- Reversible jaw inserts are serrated on one side for extra grip and smooth on the other to prevent marring on softer surfaces
- 60,000 PSI ductile iron body, jaw and base is virtually indestructible with 2X the strength of grey cast iron
- Longer spindle nut ensures smooth movement and a stronger straight-line pull
- Large anvil designed to take a beating while forming and shaping materials

IDEAL USE

- Automotive
- Construction
- Metal Fabrication
- Service and MRO



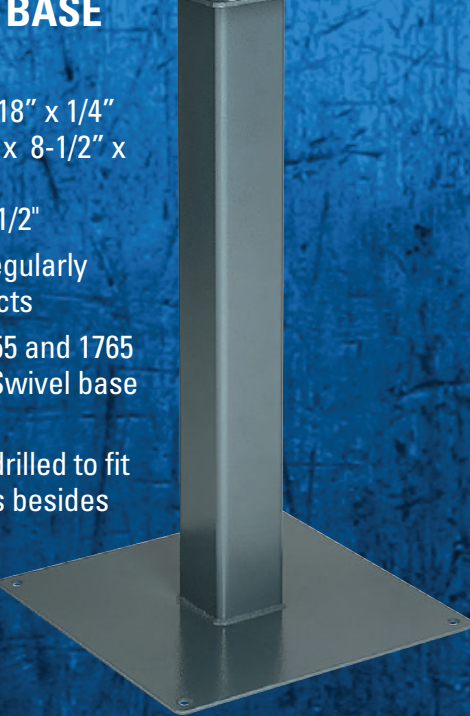
PEDESTAL BASE

DIMENSIONS

BASE: 18" x 18" x 1/4"
TOP: 10-1/2" x 8-1/2" x 1/4"
HEIGHT: 33-1/2"

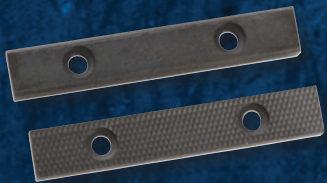
Great for irregularly shaped objects

- Supports 1755 and 1765 Tradesman Swivel base models
- Holes need drilled to fit other models besides 1755 or 1765



SPECS

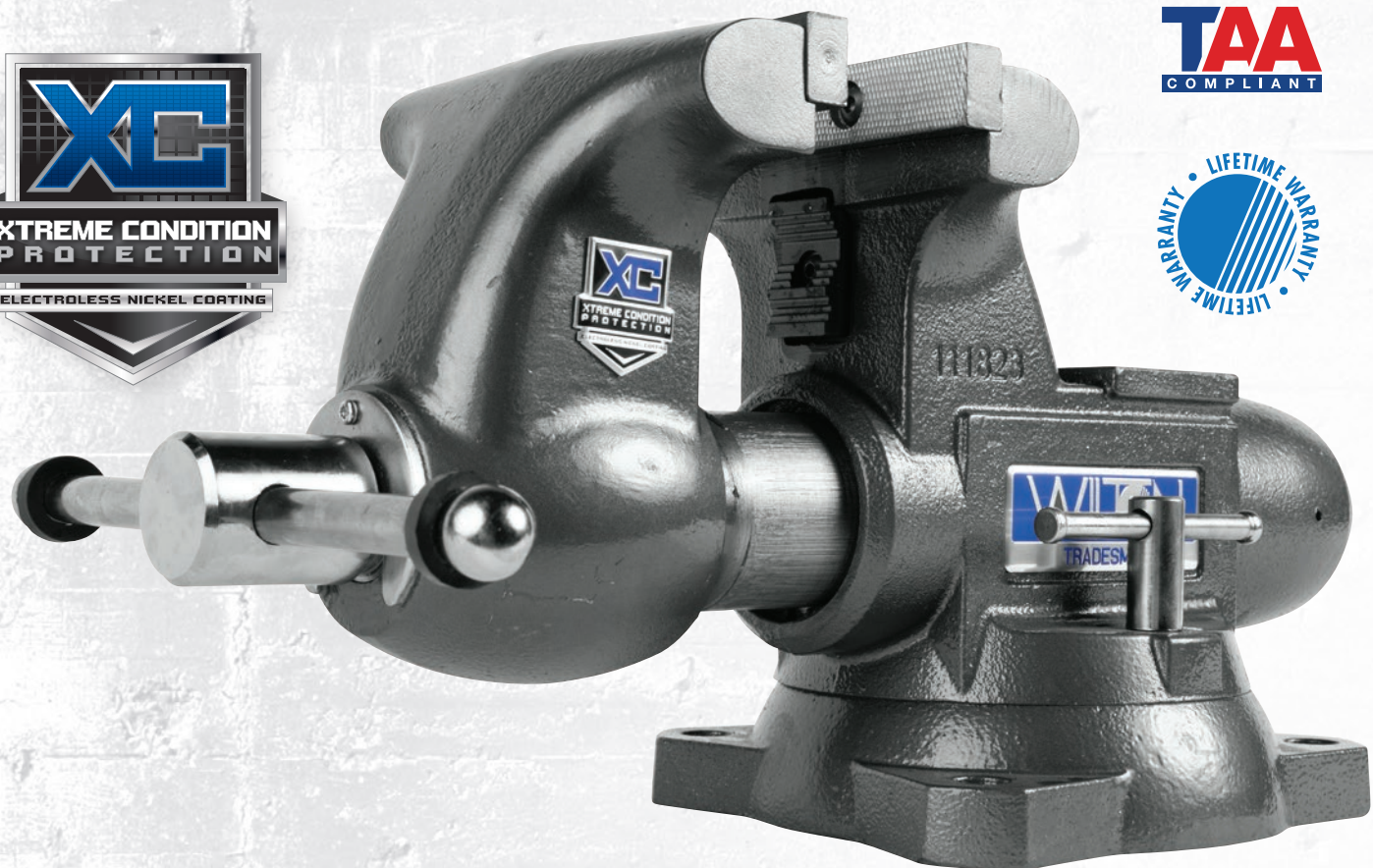
STOCK NO.	MODEL NO.	DESCRIPTION	SHIP WT. (lbs.)
63185	159V	Steel Pedestal Base Fits Models 1755 and 1765 (33-1/2" Tall Base)	55



REPLACEMENT JAWS

WISE STOCK NO.	REPLACEMENT JAW INSERT SET NO.	REPLACEMENT PIPE JAW INSERT SET NO.
28805	2908060P	2904200P
28806	2908070P	2904200P
28807	2908080P	2904200P
28808	2908100P	2908050AP

TRADESMAN XC BENCH VISES



SPECS

STOCK NO.	MODEL NO.	JAW WIDTH (in.)	MAX. JAW OPENING (in.)	THROAT DEPTH (in.)	PIPE JAW CAPACITY (in.)	NET WEIGHT (lbs.)
28840	1745XC	4-1/2	3-1/2	3-1/4	1/4 – 2-1/2	38.3
28841	1755XC	5-1/2	5	3-3/4	1/4 – 3	46.8
28842	1765XC	6-1/2	6	4	1/4 – 3-1/2	64.3
28843	1780XC	8	6-3/4	4-3/4	1/8 – 3-1/2	95.0

COMBAT EXTREME CONDITIONS WITH INNOVATIVE ELECTROLESS NICKEL COATING

Wilton Tradesman XC Vise combines all the features of the Tradesman vise with Electroless Nickel Coating applied to key components for superior protection in the harshest and most corrosive environments.

The Electroless Nickel Coating saves hundreds of dollars in repairs and helps prevent countless hours of downtime.

Wilton is proud to introduce the expanded line of bullet vises manufactured to withstand extreme conditions.

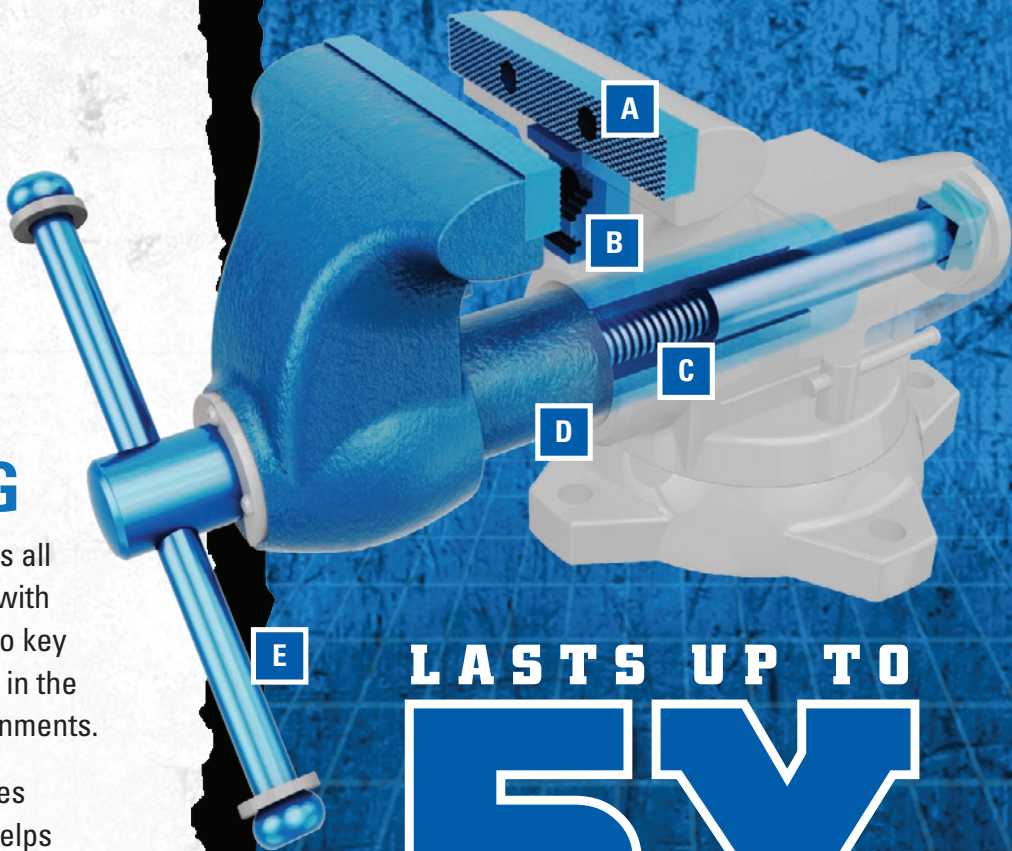
IDEAL USE

- Extreme Conditions
- Utility Work Trucks
- Outdoor Service



REPLACEMENT JAWS

WISE STOCK NO.	REPLACEMENT JAW INSERT SET NO.	REPLACEMENT PIPE JAW INSERT SET NO.
28840	2908060XC	2904200XC
28841	2908070XC	2904200XC
28842	2908080XC	2904200XC
28843	2908100XC	2908050AXC



LASTS UP TO
5X
LONGER
BEFORE CORROSION
COMPARED WITH NON-COATED VISES

COATED COMPONENT FEATURES

- A REPLACEABLE JAWS
- B PIPE JAWS
- C SEALED BULLET CONSTRUCTION
- D PRECISION SLIDE BAR
- E OVERSIZED HANDLE

OUR EXPANSIVE LINE OF INDUSTRIAL BENCH VISES HAS YOU COVERED

You take pride in your craftsmanship, so you should take pride in the tools on your workbench. WILTON's easy-to-mount, high-quality industrial bench vises are built for rugged use in any industrial setting, including professional mechanic, automotive, utility and service, and general repair.

MECHANICS PRO
PAGE 18

MECHANICS
PAGE 20

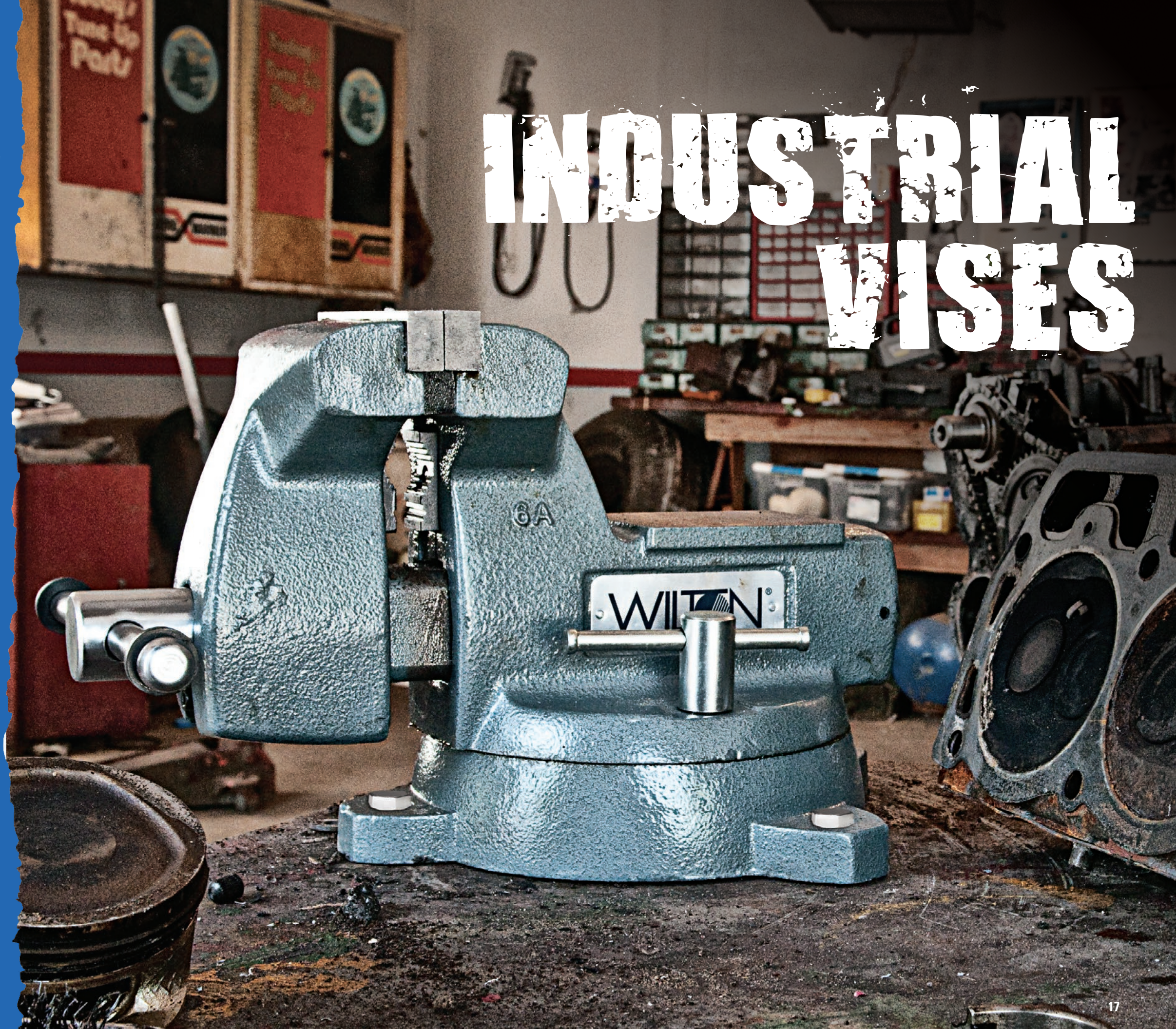
SHOP
PAGE 22

UTILITY
PAGE 23

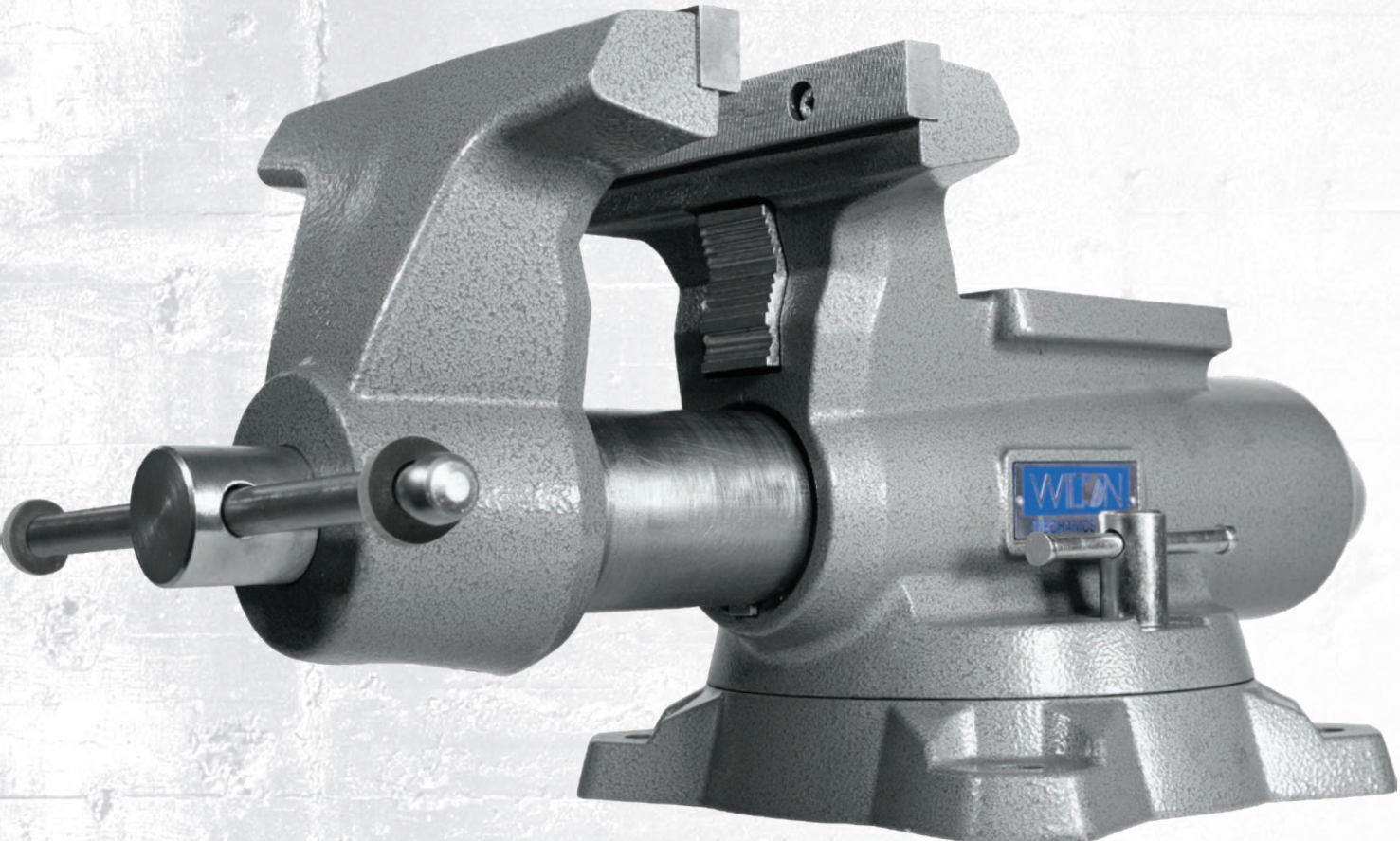
REVERSIBLE
PAGE 24

MULTI-PURPOSE
PAGE 25

INDUSTRIAL VISES



MECHANICS PRO BENCH VISES



SPECS

STOCK NO.	JAW WIDTH (in.)	MAX. JAW OPENING (in.)	THROAT DEPTH (in.)	PIPE JAW CAPACITY (in.)	NET WEIGHT (lbs.)
28810	4-1/2"	4"	3-1/2"	1/4 – 3"	31.0
28811	5-1/2"	5"	3-5/8"	1/4 – 3"	37.9
28812	6-1/2"	6"	4-3/8"	1/4 – 4"	55.6
28813	8"	8-1/2"	4-1/2"	1/2 – 4"	83.1
28814	10"	12"	5-1/4"	1/2 – 5"	115.3

BUILT TO HOLD STRONG

Featuring premium materials, an enclosed spindle, precision-machined slide bar, innovative needle roller thrust bearing, 360° swivel, and WILTON's lifetime warranty—you'll never want another vise, unless it's a WILTON.

FEATURES

- Precision Machined Slide Bar – Eliminates movement in the front jaw regardless of opened distance
- Enclosed Spindle – Keeps lubricants in and contaminants out for smooth operation
- Needle Roller Thrust Bearing -- Easier to apply & release greater clamping force
- 60,000 psi Ductile Iron Movable Jaw & Base – Greater durability with lighter weight material
- Large Anvil Work Surface – Accommodates a wide range of striking needs
- 360° Swivel Base with Double Lockdowns – Easy and secure access while in use

■ Available 10" Model

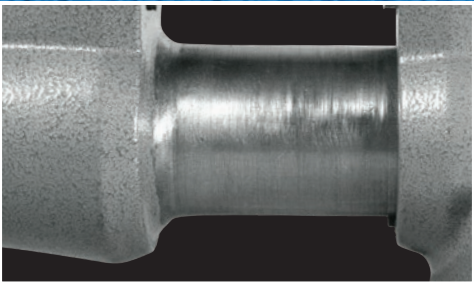
IDEAL USE

- Professional Mechanics
- Service and MRO
- Light Industrial

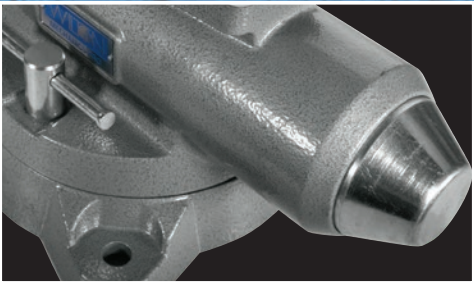


REPLACEMENT JAWS

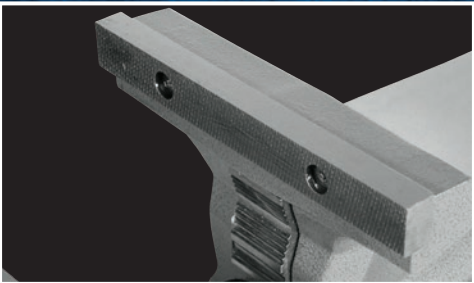
WISE STOCK NO.	REPLACEMENT JAW INSERT SET NO.	REPLACEMENT PIPE JAW INSERT SET NO.
28810	28810-008	28810-010
28811	28811-008	28811-010
28812	28812-008	28812-010
28813	28813-008	28813-010
28814	28814-008	28814-010



PRECISION-MACHINED SLIDE BAR
Eliminates movement in the front jaw regardless of opened distance



ENCLOSED SPINDLE
Keeps lubricants in and contaminants out for smooth operation



HARDENED STEEL JAWS
Serrated pattern for added grip



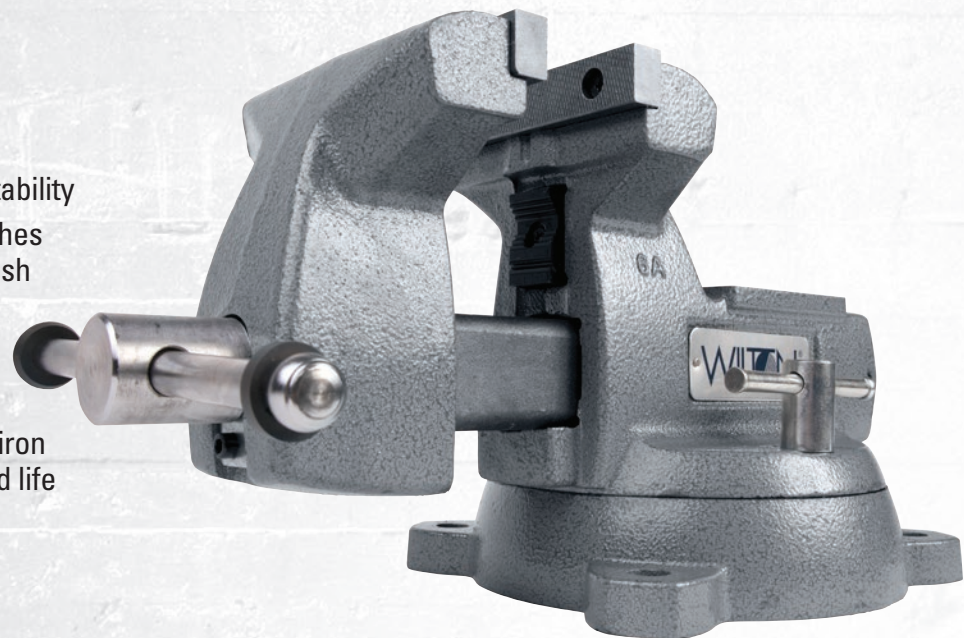
LARGE ANVIL WORK SURFACE
Accommodates a wide range of striking needs

MECHANICS BENCH VISES



FEATURES

- Durable ductile iron swivel base rotates 360° and has double lockdowns ensuring maximum stability
- Powder coat paint resists scratches and provides a tough durable finish
- Replaceable hardened steel top and pipe jaws
- Large anvil work surface
- Heavy-duty 30,000 PSI gray cast iron built for rugged use and extended life
- Fully enclosed spindle and nut



IDEAL USE

- Automotive Maintenance
- Service and MRO
- Professional Mechanics



SPECS

STOCK NO.	MODEL NO.	JAW WIDTH (in.)	MAX. JAW OPENING (in.)	THROAT DEPTH (in.)	PIPE JAW CAPACITY (in.)	NET WEIGHT (lbs.)
21300	744	4	4-1/2	3-7/16	1/4 – 2	37.0
21400	745	5	5-1/4	3-3/4	1/4 – 2-1/2	45.6
21500	746	6	5-3/4	4-1/8	1/4 – 3-1/2	63.1
21800	748A	8	8-1/4	4-3/4	1/4 – 3-1/2	81.1

REPLACEMENT JAWS

REPLACEMENT JAW INSERT SET NO.	REPLACEMENT PIPE JAW INSERT SET NO.
21300-03	21300-03
2904110	21400-03
21500-03	21500-03
21800-03	21800-03



HARDENED STEEL JAWS



SEALED CONSTRUCTION



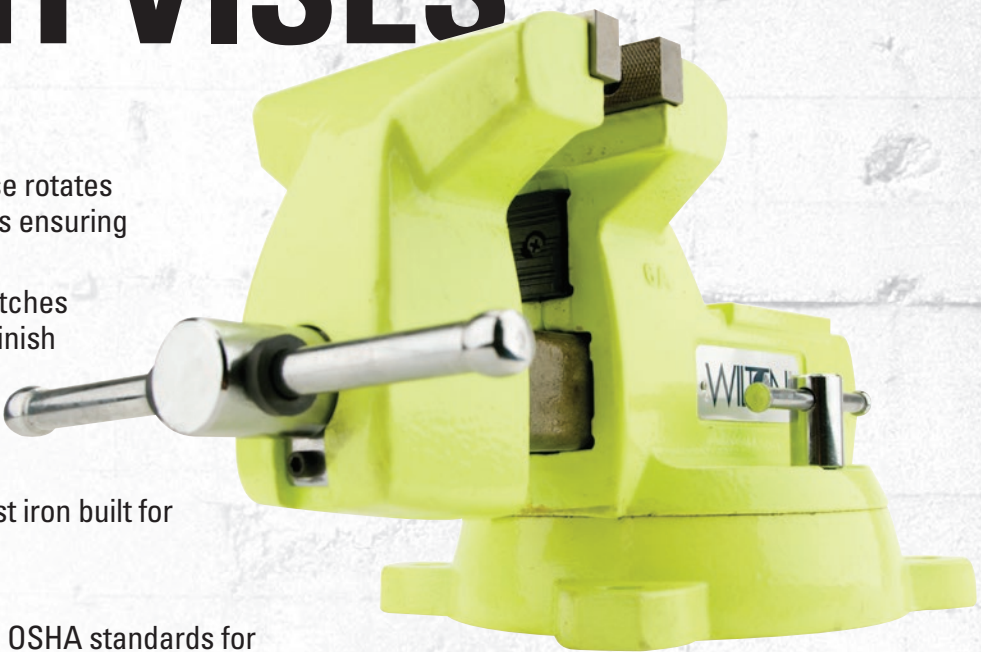
4 MOUNTING POSTS

HI-VIS SAFETY BENCH VISES



FEATURES

- Durable ductile iron swivel base rotates 360° and has double lockdowns ensuring maximum stability
- Powder coat paint resists scratches and provides a tough durable finish
- Replaceable hardened steel top and pipe jaws
- Large anvil work surface
- Heavy-duty 30,000 PSI gray cast iron built for rugged use and extended life
- Fully enclosed spindle and nut
- Hi-Visibility Yellow conforms to OSHA standards for Physical Hazards Regulation #1910.144



IDEAL USE

- Automotive Maintenance
- Service and MRO
- Professional Mechanics



SPECS

STOCK NO.	MODEL NO.	JAW WIDTH (in.)	MAX. JAW OPENING (in.)	THROAT DEPTH (in.)	PIPE JAW CAPACITY (in.)	NET WEIGHT (lbs.)
63187	1550	5	5-1/4	3-3/4	1/4 – 2-1/2	45.6
63188	1560	6	5-3/4	4-1/8	1/4 – 3-1/2	63.1

REPLACEMENT JAWS

REPLACEMENT JAW INSERT SET NO.	REPLACEMENT PIPE JAW INSERT SET NO.
21400-03	21400-03
21500-03	21500-03



HARDENED STEEL JAWS



SEALED CONSTRUCTION



4 MOUNTING POSTS

SHOP BENCH VISES

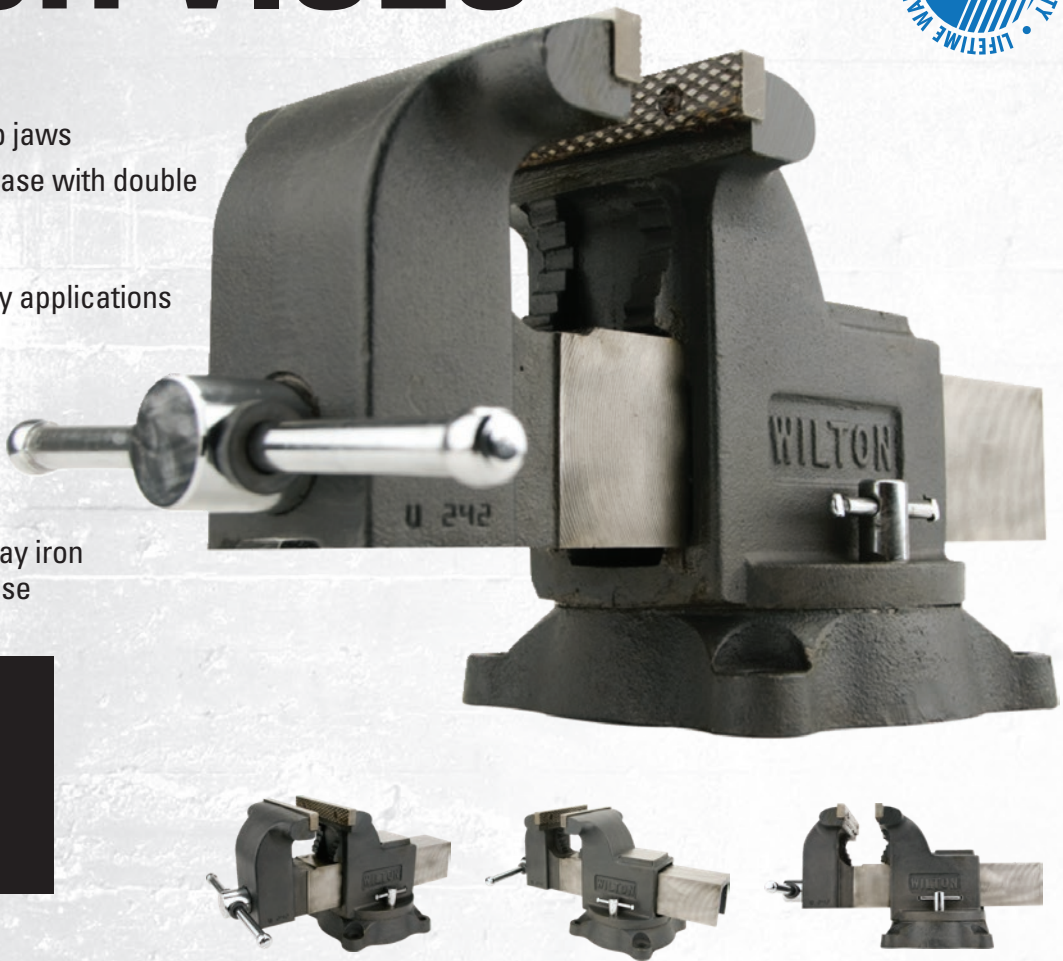


FEATURES

- Replaceable serrated top jaws
- 360° ductile iron swivel base with double lockdown for quick and easy positioning
- Designed for general duty applications
- Built in pipe jaws handle various pipe sizes
- Rubber pinch point safety guards
- Large anvil work surface
- Heavy-duty 30,000 PSI gray iron casting built for rugged use

IDEAL USE

- Light Tradesmen
- Utility and Service
- General Purpose



SPECS

STOCK NO.	MODEL NO.	JAW WIDTH (in.)	MAX. JAW OPENING (in.)	THROAT DEPTH (in.)	PIPE JAW CAPACITY (in.)	NET WEIGHT (lbs.)
63300	WS4	4	4	2-3/4	5/8 - 2	20.3
63301	WS5	5	5	3	5/8 - 2-3/8	28.2
63302	WS6	6	6	3-1/2	5/8 - 2-1/2	41.9
63304	WS8	8	8	4	3/4 - 3	65.3



PIPE JAWS



LARGE ANVIL



4-BOLT MOUNTING POSTS

UTILITY & UTILITY HD BENCH VISES



FEATURES

- Powder coat paint resists scratches and provides a tough durable surface
- Replaceable hardened steel jaws with a serrated pattern ensure grip and a long life
- Dual lock-downs and a 360° swivel base
- Built-in pipe jaws handle a range of pipe sizes
- Large anvil work surface for forming and shaping materials
- Perfect for general clamping applications
- Rugged and versatile yet moderately priced

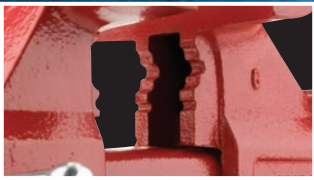
IDEAL USE

- Automotive
- Utility and Service
- General Purpose

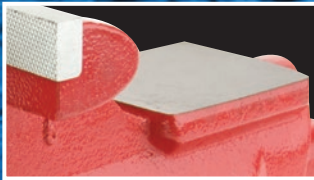


SPECS

STOCK NO.	MODEL NO.	JAW WIDTH (in.)	JAW OPENING (in.)	THROAT DEPTH (in.)	PIPE JAW CAPACITY (in.)	NET WEIGHT (lbs.)
UTILITY BENCH VISES						
28818	674U	4-1/2	4	2-5/8	1/8 - 1-1/2	16.5
28819	675U	5-1/2	5	3-1/4	1/4 - 2	25.5
28820	676U	6-1/2	6	4	1/4 - 2	39.7
UTILITY HD BENCH VISES						
28815	656UHD	6-1/2	6-1/4	4-1/4	1/4 - 3-1/2	49.4
28816	648UHD	8	8-1/2	4-1/2	3/4 - 4	78.7



PIPE JAWS



LARGE ANVIL



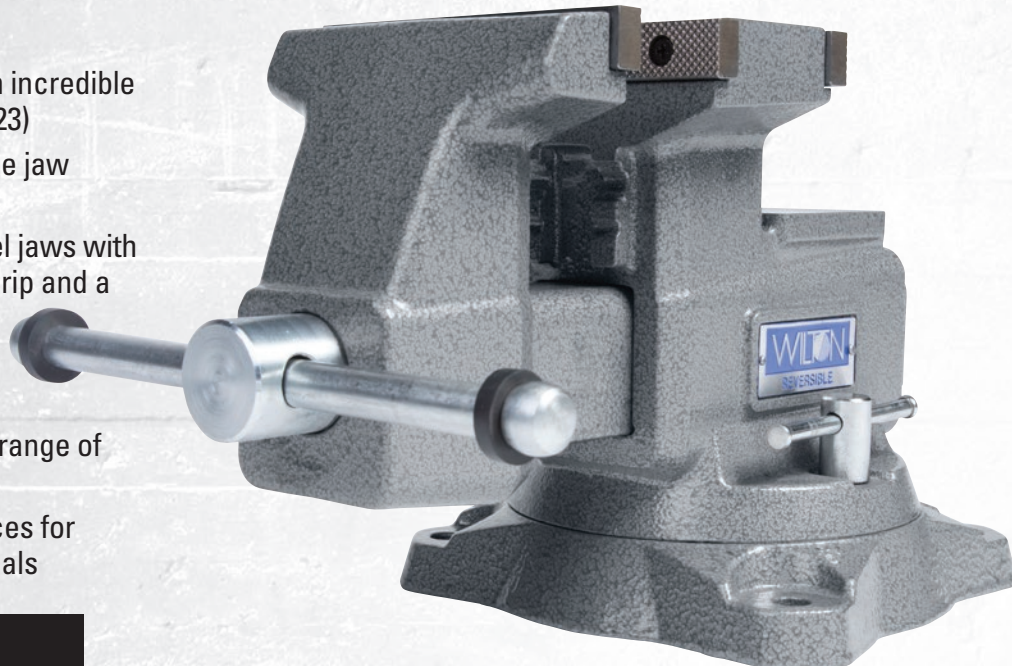
4-BOLT MOUNTING POSTS

REVERSIBLE BENCH VISES



FEATURES

- Jaw opening expands to an incredible 14-1/2" when reversed (28823)
- When in normal position, the jaw opening is 9-1/4" (28823)
- Replaceable hardened steel jaws with a serrated pattern ensure grip and a long life
- Dual lock-downs and a 360° swivel base
- Built-in pipe jaws handle a range of pipe sizes
- Two large anvil work surfaces for forming and shaping materials



IDEAL USE

- Automotive Maintenance
- Light Tradesmen
- Professional Mechanics



SPECS

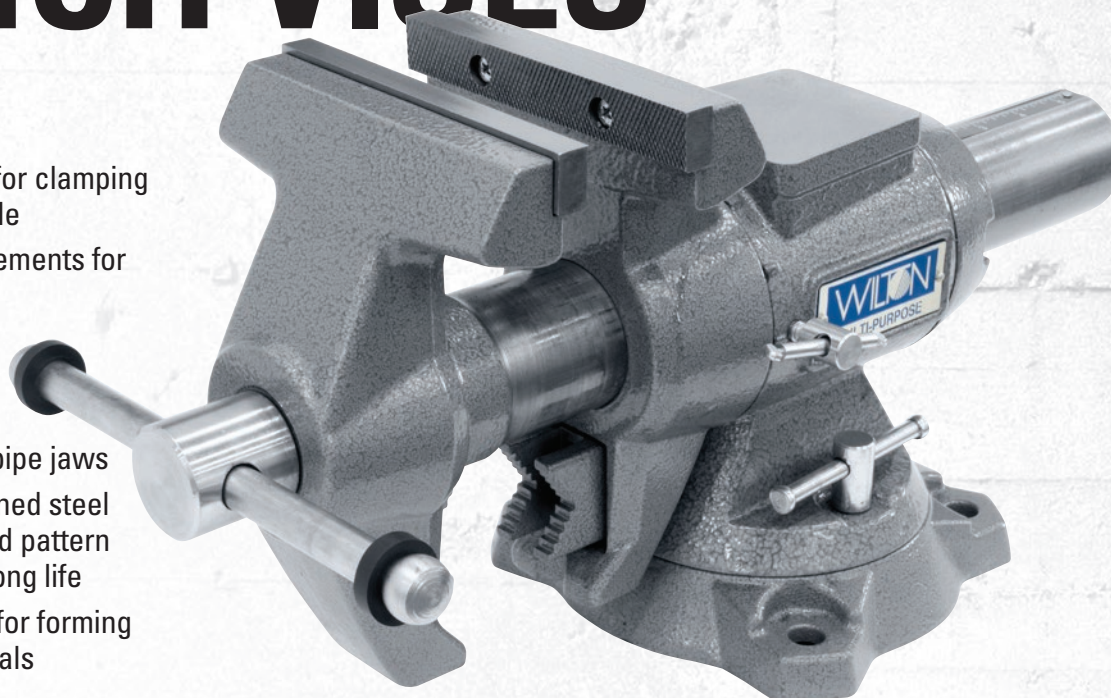
STOCK NO.	MODEL NO.	JAW WIDTH (in.)	MAX. JAW OPENING (in.)	THROAT DEPTH (in.)	PIPE JAW CAPACITY (in.)	NET WEIGHT (lbs.)
28821	4500	5-1/2	6-3/4 / 10-3/4	3-3/4	1/8 – 2-1/2	48.7
28822	4600	6-1/2	7-1/4 / 12-3/4	4	1/4 – 3	53.4
28823	4800	8	9-1/4 / 14-1/2	4-3/4	3/8 – 4	74.5

MULTI-PURPOSE BENCH VISES



FEATURES

- 360° rotating head for clamping material at any angle
- Indexed at 30° increments for quick set up
- V-jaw easily holds round stock vertically
- Replaceable steel pipe jaws
- Replaceable hardened steel jaws with a serrated pattern ensure grip and a long life
- Large built-in anvil for forming and shaping materials



IDEAL USE

- Light Tradesmen
- Utility and Service
- General Purpose

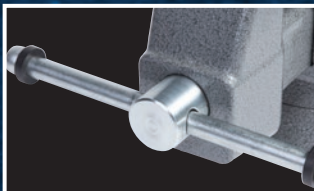


SPECS

STOCK NO.	JAW WIDTH (in.)	MAX. JAW OPENING (in.)	THROAT DEPTH (in.)	PIPE JAW CAPACITY (in.)	NET WEIGHT (lbs.)
28844	4-1/2	4-1/4	2-1/4	1/4 – 1-11/16	21.3
28824	5-1/2	5	2-3/4	5/8 – 2-1/4	40.0
28845	6-1/2	6-1/4	3-1/4	5/8 – 3	58.4



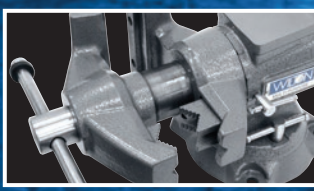
HARDENED STEEL
JAWS



PRECISION SLIDE
HANDLE



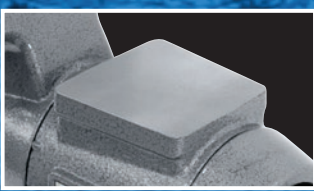
INDUSTRIAL 360°
LOCKING SWIVEL BASE



360° JAW ROTATION



PERMANENT PIPE
JAWS



LARGE ANVIL

GENERAL PURPOSE BENCH VISES



FEATURES

VICE BODY & BASE:

- Made from 30,000 PSI grey cast iron

JAW FACES:

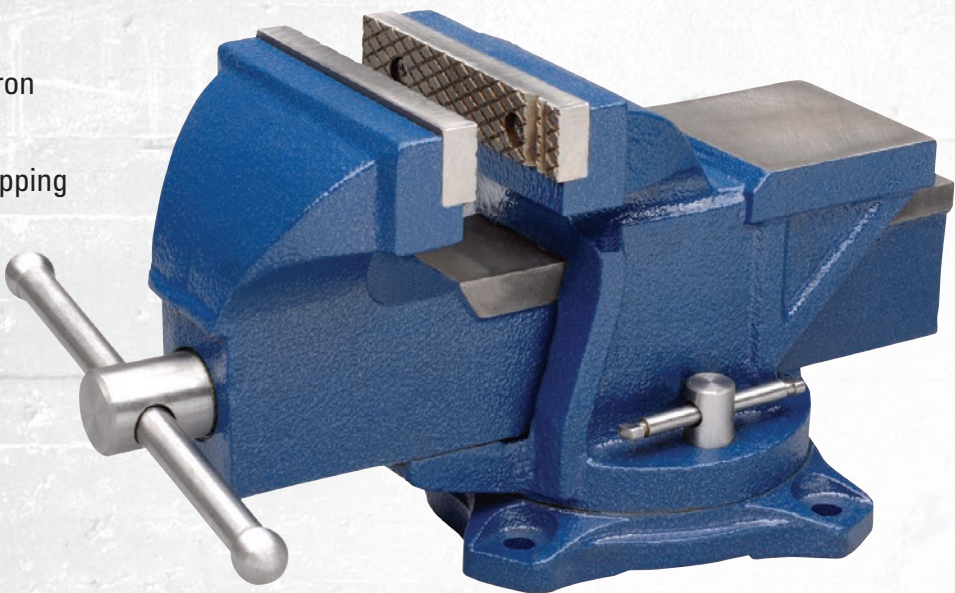
- Diamond-serrated for positive gripping

BASE:

- 120 degree swivel base with double lockdown

LARGE ANVIL:

- Built-in anvil for flat shaping



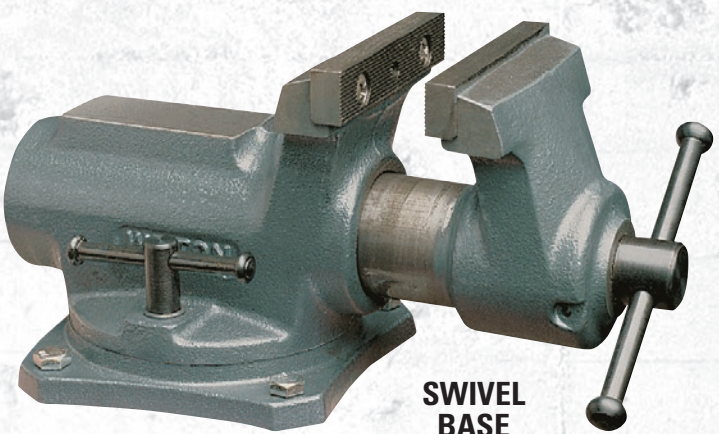
IDEAL USE

- General Purpose
- Home Shop
- Light Duty Use
- Weekend Projects

SPECS

STOCK NO.	JAW WIDTH (in.)	MAX. JAW OPENING (in.)	THROAT DEPTH (in.)	NET WEIGHT (lbs.)
11104	4	3	2-1/4	16.0
11105	5	4	2-1/2	27.0
11106	6	5	3	39.0

SUPER JUNIOR VISES



SWIVEL BASE

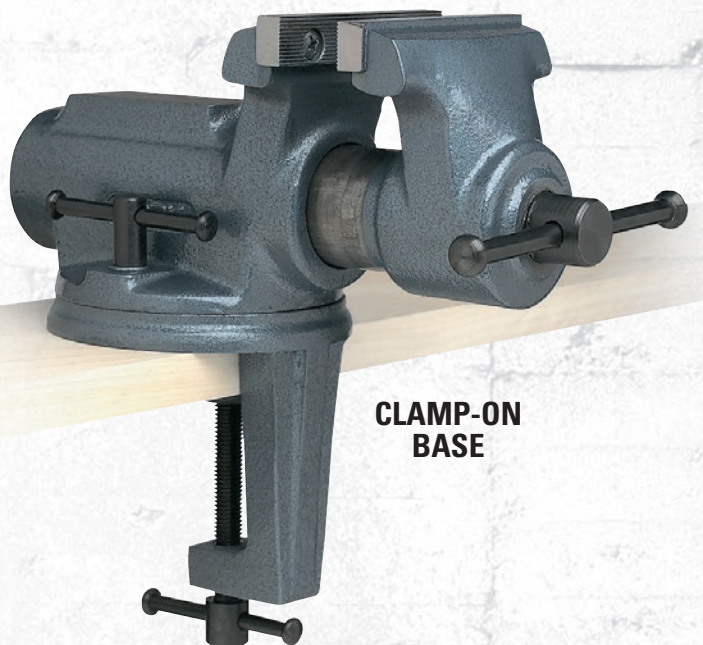


FEATURES

- Super-Junior® Vises come in two styles- clamp-on and swivel base
- Enclosed design keeps contaminants out and lubrication in for smooth operation
- Top jaws are grooved and replaceable
- Double lockdowns ensure stability
- Both swivel and clamp-on base models can rotate 45° left or right on base

IDEAL USE

- General Purpose
- Light Tradesman



CLAMP-ON BASE

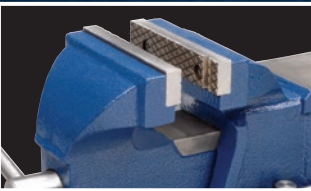
SPECS

STOCK NO.	MODEL NO.	JAW WIDTH (in.)	MAX JAW OPENING (in.)	THROAT DEPTH (in.)	NET WEIGHT (lbs.)
CLAMP ON BASE					
63198	CBV-65	2-1/2	2-1/8	1-3/4	11
63247	CBV-100	4	2-1/4	2	18
SWIVEL BASE					
63244	SBV-65	2-1/2	2-1/8	1-3/4	9
63248	SBV-100	4	2-1/4	2	14

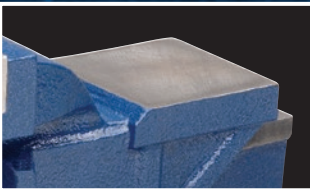
REPLACEMENT JAWS

STOCK NO.	REPLACEMENT JAW INSERT STOCK NO.
CLAMP ON BASE	
63198	2900270
63247	2900300
SWIVEL BASE	
63244	2900270
63248	2900300

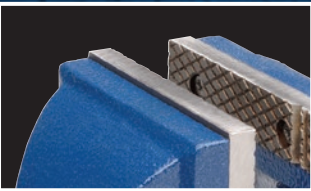
NOTE: 3" CLAMP-ON OPENING



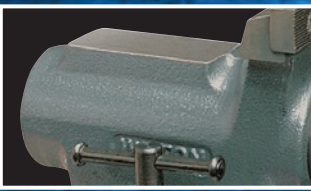
HIGH-STRENGTH STEEL CONSTRUCTION



BUILT-IN ANVIL



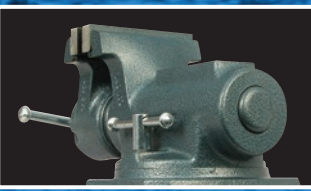
DIAMOND-SERRATED JAW FACES



BROAD ANVIL



LIGHTWEIGHT AND PORTABLE



FULLY ENCLOSED DESIGN

CLAMP-ON VISES



FEATURES

DOUBLE STEEL GUIDE BARS:

- Ensures parallel alignment of pipe jaws for consistent holding force

CAST JAWS:

- Holds workpiece firmly

PORTABLE:

- Vise can quickly and easily be transferred to new work station

IDEAL USE

- General Purpose
- Light Tradesman
- Woodworking



STATIONARY
BASE

SWIVEL
BASE

SPECS

STOCK NO.	MODEL NO.	JAW WIDTH (in.)	MAXIMUM OPENING (in.)	NET WEIGHT (lbs.)
STATIONARY BASE				
33150	150	3	2-1/2	4
SWIVEL BASE				
33153	153	3	2-1/2	6



DOUBLE STEEL GUIDE
BARS



CAST JAWS

WOODWORKING VISES



FEATURES

WOODWORKING FEATURES:

- Self-Centering Jaw: Ensure a strong hold on all workpiece no matter what the shape
- Front jaw pivots 10° to allow for irregularly shaped parts
- Pivot jaw can be removed for wider clamping requirements

LIGHT-DUTY FEATURES:

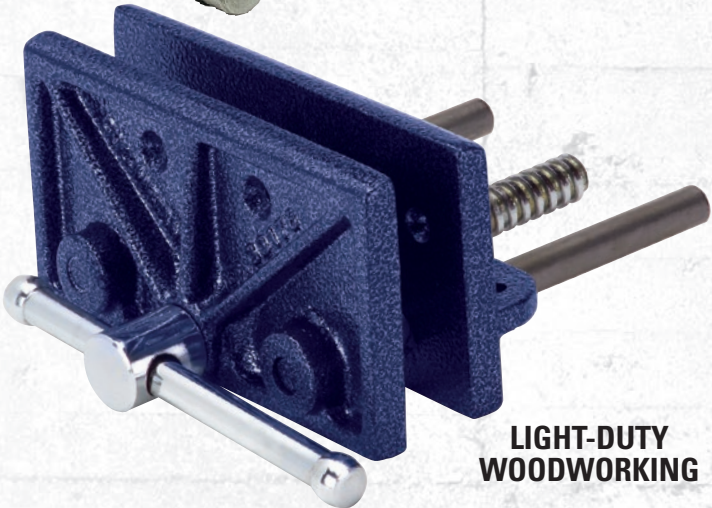
- High-tensile iron jaws provide strength and durability
- Lightweight design: perfect for home craftsmen
- Cold rolled steel guide bars offer strength and integrity to the tool

IDEAL USE

- Woodworking
- Light Tradesman



WOODWORKING



LIGHT-DUTY
WOODWORKING

SPECS

STOCK NO.	MODEL NO.	JAW WIDTH (in.)	MAX. JAW OPENING (in.)	TYPE OF NUT	REPLACEMENT JAW INSERT NO.	NET WEIGHT (lbs.)
WOODWORKING VISE						
63144	78A	4 x 7	10	Rapid	63142	32
63218	79A	4 x 10	13	Rapid	63143	36
LIGHT-DUTY WOODWORKING VISE						
33176	176	6-1/2	4-1/2	-	-	6



SELF-CENTERING JAW



REPLACEABLE MAPLE
JAW INSERTS



STURDY STEEL HANDLE

BENCH VISE ACCESSORIES



MAGNEFIX® ALUMINUM JAW CAPS

- Aluminum alloy design includes six grooves to compensate for the unevenness of the workpiece
- Deeper V-groove ensures more secure clamping of circular workpieces
- Use together with Rubber Magnefix Jaw Caps when clamping taper pins and spherical parts

SPECS

STOCK NO.	MODEL NO.	JAW WIDTH (in.)	NET WEIGHT (lbs.)
14828	A-4	4	1
14829	A-4.5	4-1/2	1
14830	A-5	5	1
14871	A-5.5	5-1/2	1
14831	A-6	6	1
14874	A-6.5	6-1/2	1

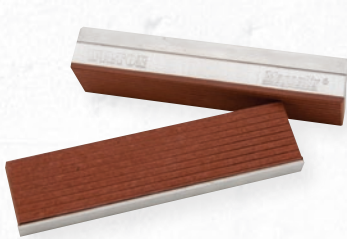


MAGNEFIX® RUBBER FACE JAW CAPS

- Aluminum alloy with synthetic rubber cover
- Jaw cap conforms to workpiece and grips firmly without slipping while protecting work surface
- Use in combination with aluminum and prism jaw caps to clamp taper pins or tapered workpieces

SPECS

STOCK NO.	MODEL NO.	JAW WIDTH (in.)	NET WEIGHT (lbs.)
14838	R-3	3	1
14840	R-4	4	1
14841	R-4.5	4-1/2	1
14842	R-5	5	1
14872	R-5.5	5-1/2	1
14843	R-6	6	1
14875	R-6.5	6-1/2	1



MAGNEFIX® FIBER FACE JAW CAPS

- Aluminum alloy with laminated fiber cover to prevent the absorption of outside materials
- Heat parts rapidly by concentrating heat into part
- Use on workpieces to avoid distortion and clamping marks

SPECS

STOCK NO.	MODEL NO.	JAW WIDTH (in.)	NET WEIGHT (lbs.)
14834	F-4	4	1
14835	F-4.5	4-1/2	1
14836	F-5	5	1
14837	F-6	6	1



MAGNEFIX® PRISM JAW CAPS

- Aluminum alloy design with synthetic rubber cover
- Jaw construction includes a 120° horizontal V-groove, three vertical V-grooves and a 90° groove for marking out and center punching
- Ideal for light tapping and thread cutting

SPECS

STOCK NO.	MODEL NO.	JAW WIDTH (in.)	NET WEIGHT (lbs.)
14846	P-4	4	1
14847	P-4.5	4-1/2	1
14848	P-5	5	1
14873	P-5.5	5-1/2	1
14849	P-6	6	1
14876	P-6.5	6-1/2	1



COPPER JAW CAPS

- Designed to avoid marring the surface of materials
- 100% copper jaw caps have polished faces and pliable copper extensions for a sure-grip fit

SPECS

STOCK NO.	MODEL NO.	JAW WIDTH (in.)	NET WEIGHT (lbs.)
24403	404-3	3	1
24404	404-3-1/2	3-1/2	1
24405	404-4	4	1
24406	404-4-1/2	4-1/2	1
24407	404-5	5	1
63203	404-5-1/2	5-1/2	2
24408	404-6	6	2
63204	404-6-1/2	6-1/2	3
24409	404-8	8	4



MULTI-GRIP VISE JAWS

- Soft polyurethane jaws designed to avoid marring the surface of softer metals and to protect jaw face
- Designed to fit any 3" – 6" vise jaws
- Magnetic back mounts securely to jaw
- Great for holding wood, metal and tubing
- One size fits all

SPECS

STOCK NO.	MODEL NO.	JAW WIDTH (in.)	NET WEIGHT (lbs.)
21111	21111	5-1/2	1

POW-R-ARMS

WORKHOLDING SUPPORT FOR PRODUCTION LINES



POW-R-ARM™ MECHANICAL NO. 301

- Extra-strong positioner with exceptionally fast on-off action designed for high production assembly line applications
- Body is machined cast iron with all-steel parts
- Two mounting holes at top (5/16-18) are 1" apart



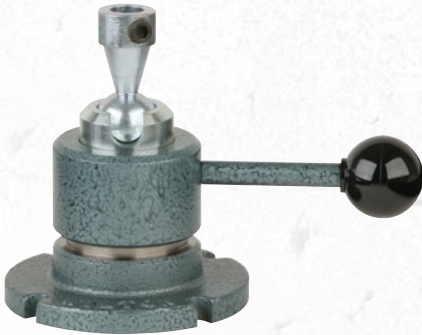
POW-R-ARM™ HYDRAULIC NO. 303

- Same size and strength as Model 301 with hydraulic locking action
- Rated for heavy-duty assembly, welding, maintenance and tool room work
- Hydraulic system is hand operated, self-contained and sealed with replaceable cups
- Two mounting holes at top (5/16-18), 1" apart



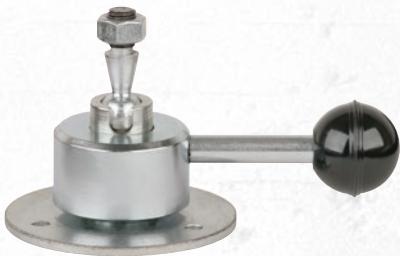
POW-R-ARM™ JUNIOR NO. 343

- Fast on-off action with horizontal-moving lock handle
- Body is cast aluminum with steel parts
- 3" diameter mounting pad with two 1/4 – 20 holes 180° apart
- Four equally spaced, slotted 9/32" diameter mounting holes



POW-R-ARM™ VEEP NO. 344

- Design provides more work holding capacity and faster on-off action
- Horizontal handle is easily accessible and dwells below level of work
- Steel body is cadmium-plated with cast iron base
- Mounting hole at top is 1/2" diameter x 1/2" deep with set screw to hold a fixture
- Four equally spaced, slotted 1/4" diameter mounting holes
- For light production assembly or electronic applications



POW-R-ARM™ MIDGET NO. 345

- Recommended for intricate electronic work including small printed circuits
- Fast on-off action with horizontal handle
- All-steel parts
- Mounting stud at top is 5/16-24 x 15/32" long

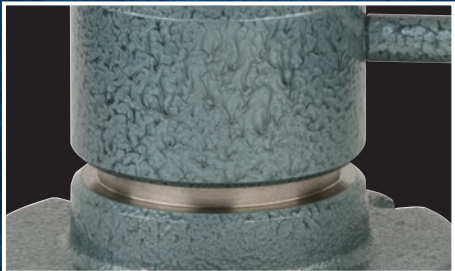
STOCK NO.	MODEL NO.	WORKHOLDING CAPACITY (lbs.)	BASE DIAMETER (in.)	DIAMETER BOLT CIRCLE (in.)	EXTENDED HEIGHT (in.)	NET WEIGHT (lbs.)
POW-R-ARM MECHANICAL NO. 301						
16240	301	70	5-15/16	5	10-1/2	14
POW-R-ARM HYDRAULIC NO. 303						
16300	303	150	5-7/8	5	10-1/2	15
POW-R-ARM JUNIOR NO. 343						
16180	343	30	4-1/4	2-1/4	5	4
POW-R-ARM VEEP NO. 344						
16120	344	20	3-3/4	3-3/8	4-1/4	3
POW-R-ARM MIDGET NO. 345						
16060	345	6	2-1/2	1-7/8	1-1/4	1



ERGONOMIC HANDLES



MACHINED STEEL PARTS



CAST IRON & ALUMINUM BODY



POW-R-ARMS HAVE BEEN POPULAR IN PRODUCTION LINES FOR DECADES. SEEN HERE IN USE AT BURROUGHS CORPORATION, CIRCA 1956.



2-IN-1 TRUCK HITCH VISES

When you have to go outside the workshop—but still need to bring the quality and brute strength of a WILTON vise with you—our ATV® All-Terrain Vises can meet the challenge.



MOUNTS TO YOUR TRUCK
FITS STANDARD 2" HITCH



MOUNTS TO YOUR BENCH
MOUNTING BRACKET INCLUDED WITH 6" ATV

TRUCK HITCH VISES



ATV TRUCK HITCH VISES



SPECS

STOCK NO.	JAW WIDTH (in.)	MAX. JAW OPENING (in.)	THROAT DEPTH (in.)	PIPE JAW CAPACITY (in.)	NET WEIGHT (lbs.)
ATV® – ALL-TERRAIN VISE					
10010	6	5-3/4	5	3/4-3	34
10025	5	6	4-1/4	7/8-3	25.5
ATV® – ALL-TERRAIN VISE WITH CARRYING CASE					
10015	6	5-3/4	5	3/4-3	44

ACCESSORIES

STOCK NO.	DESCRIPTION	NET WEIGHT (lbs.)
10055	10" Riser	5
10065	Locking Hitch Pin	1
10300	Mounting Bracket	6
10350	Carrying Case	10

FEATURES

DRIVE TIGHT SET SCREWS:

- Patented set screws adjust to provide a tight fit in the hitch and reduce vibration while driving

360° LOCKING HANDLE:

- Secures the handle while driving or repositions it while working

PIPE JAWS:

- Pipe jaws clamp round objects up to 3"

REPLACEABLE JAWS:

- Include a V-groove for vertical clamping of round objects (*6" Model Only*)

LARGE ANVIL:

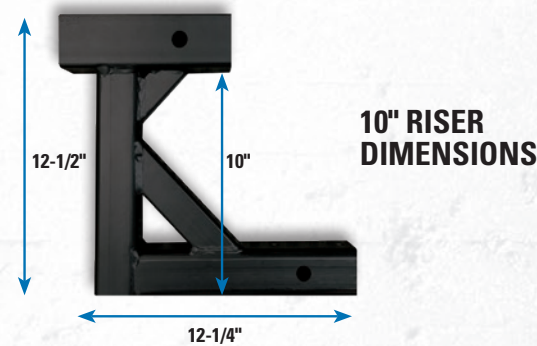
- Large striking anvil for forming and shaping materials.

MOUNTING BRACKET:

- Can be mounted on a bench or trailer for even greater versatility
- Included with 6" ATV (SKUs 10010 and 10015)

IDEAL FOR

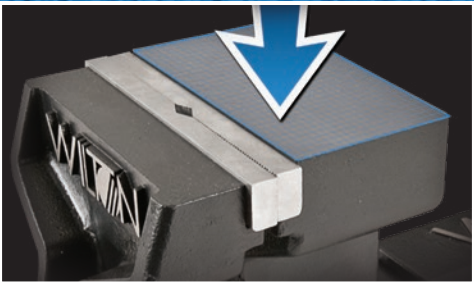
- Construction
- Automotive
- Farm and Ranch
- Off-Roaders



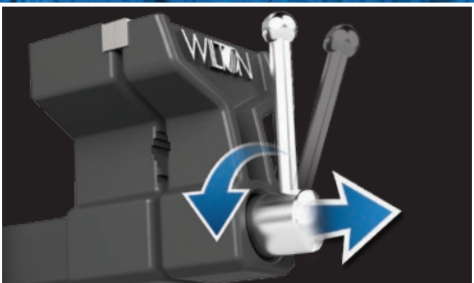
10" RISER
DIMENSIONS



MOUNTING
BRACKET
DIMENSIONS



LARGE STRIKING ANVIL



360° LOCKING HANDLE



DRIVE TIGHT SET SCREWS



CARRYING HANDLE

WILTON® MACHINE VISES ARE ACCURATE SOLID AND TRUE

For consistent clamping force, you need robust and durable machine vises. Wilton machine vises are versatile, compact, and offer excellent dimensional stability.

VERTI-LOCK® MILLING
PAGE 40

SUPER PRECISION MILLING
PAGE 41

DRILL PRESS
PAGE 42

MACHINE VISES



VERTI-LOCK[®] MILLING VISE



FEATURES

WISE BODY:

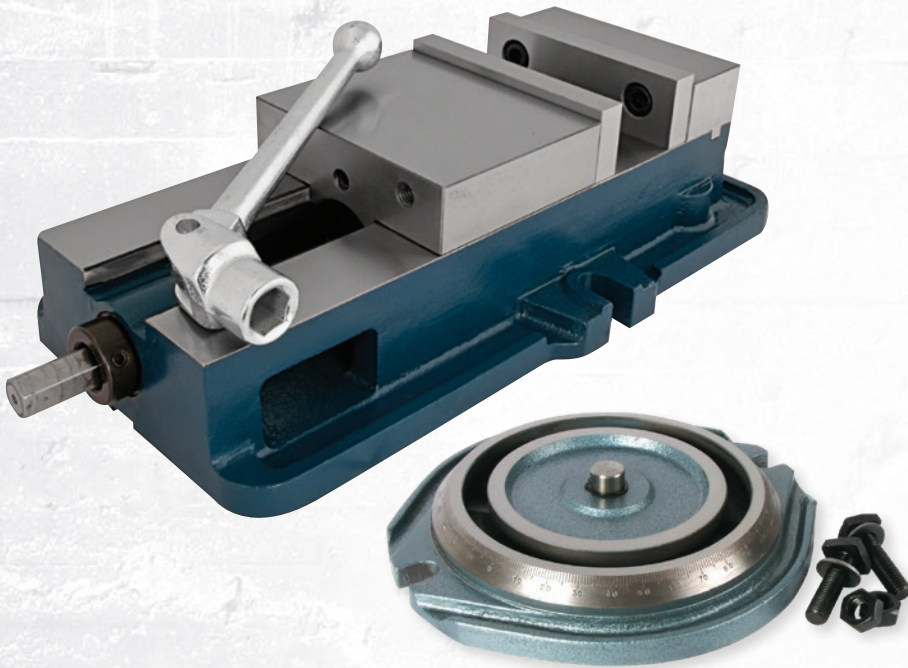
- The ductile alloy vise body with flame-hardened bed provides solid work support, accuracy, and longevity

WISE JAWS:

- The fixed jaw is rated at 85,000 PSI and the annealed, surface ground sliding jaw at 70,000 PSI

SPINDLE:

- Fully enclosed spindle is protected from milling elements
- Cut from special alloy steel, hardened and ground



SWIVEL BASE

STANDARD VISE SPECS

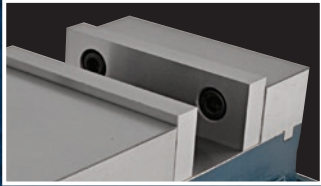
STOCK NO.	MODEL	JAW WIDTH (in.)	JAW DEPTH (in.)	MAX. JAW OPENING (in.)	NET WEIGHT (lbs.)
12390	1250N	5	1-7/16	4-1/2	50
63186	1275N	6	1-3/4	7-1/2	75
12375	1280N	8	2-1/4	7-1/2	164

SWIVEL BASE SPECS

STOCK NO.	MODEL	JAW WIDTH (in.)	NET WEIGHT (lbs.)
12285	5S	5	20
12290	6S	6	26
12295	8S	8	48



FLAME-HARDENED BED



HARDENED JAWS



COOLANT DRAIN

SUPER PRECISION MILLING VISES



SUPER PRECISION 2-AXIS ANGULAR

- Perfect vise for applications where the workpiece requires machining on an angle
- Vise bodies are constructed of close-grained, high-tensile, seasoned alloy castings
- All ground surfaces made to close tolerances
- Ergonomically designed all-steel handle with spring-loaded ball attachment
- Hardness of jaws $55 \pm 3\text{HRC}$
- 360° swivel base
- 90° vertical and 180° horizontal indexing
- Perfectly indexed for angular work
- Bases have keyways and bolt slots for machine mounting

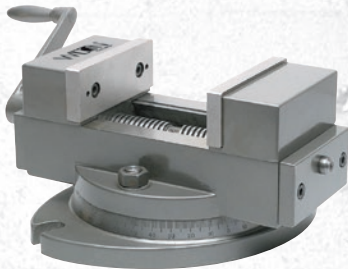
STOCK NO.	MODEL NO.	JAW WIDTH (in.)	JAW DEPTH (in.)	JAW OPENING (in.)	NET WEIGHT (lbs.)
11703	AMV/SP-50	2	15/16	2	8
11704	AMV/SP-75	3	1-5/16	3	22
11705	AMV/SP100	4	1-9/16	4	43
11706	AMV/SP125	5	2	5	74
11707	AMV/SP150	6	2	6	101



SUPER PRECISION 3-AXIS TILTING

- Perfect vise for 3-axis jobs in milling, drilling, grinding, shaping and jig boring
- Vise bodies are constructed of close-grained, high-tensile, seasoned alloy castings
- Ergonomically designed all-steel handle with spring-loaded ball attachment
- Durable polychromatic finish
- Accurately indexed for 3 way angular work
- Hardness of jaws $55 \pm 3\text{HRC}$
- 360° swivel base
- 45° tilting range on either side
- 90° vertical indexing
- Bases have keyways and bolt slots for machine mounting

STOCK NO.	MODEL NO.	JAW WIDTH (in.)	JAW DEPTH (in.)	JAW OPENING (in.)	NET WEIGHT (lbs.)
11700	TLT/SP-50	2	1	2	10
11701	TLT/SP-75	3	1-5/16	3	26
11702	TLT/SP-100	4	1-1/2	4	52
11803	TLT/SP-125	5	1-3/4	5	84
11804	TLT/SP-150	6	1-3/4	6	119

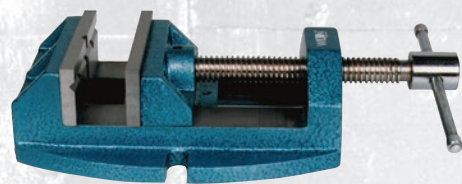


SUPER PRECISION SELF-CENTERING

- Very convenient for use with drilling and milling machines where quick centering is required
- Allows for accurate centering of jobs automatically
- Special design allows accurate setting up of jobs with only a single machine setting
- Vise bodies are constructed of close-grained, high-tensile, seasoned alloy castings
- Swivel base provided with positive locking and adjustable through 360°
- Hardness of jaws $55 \pm 3\text{HRC}$
- Automatically adjusts work piece to center

STOCK NO.	MODEL NO.	JAW WIDTH (in.)	JAW DEPTH (in.)	JAW OPENING (in.)	NET WEIGHT (lbs.)
11713	SCV/SP-100	4	1-1/2	4	34

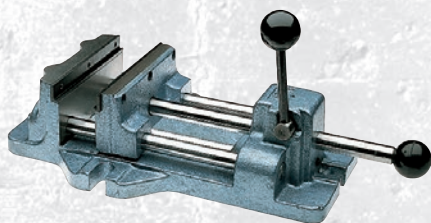
DRILL PRESS VISES



VERSATILE DRILL PRESS VISES

- Rapid-acting nut disengages spindle for quick adjustments
- Made from high-grade cast iron
- Ground vise bed for smooth, consistent jaw movement
- Hardened top V-groove jaws
- Rugged design and large workload capacity

STOCK NO.	MODEL NO.	JAW WIDTH (in.)	MAX. JAW OPENING (in.)	JAW DEPTH (in.)	NET WEIGHT (lbs.)
CONTINUOUS NUT					
63238	1335	3	2-3/4	1-1/8	6
63239	1345	4	4	1-1/2	12
63240	1360	5-1/2	5	1-7/8	20
RAPID-ACTING NUT					
63242	1445	4-1/2	4-3/4	1-7/8	15
63243	1460	6	6-3/4	2-1/8	29



CAM ACTION DRILL PRESS VISES

- Simple push or pull on the center bar knob sets the jaw in position
- Easy press-locking lever cams the jaw ahead 3/32", exerting a holding pressure that is adjustable from 400 to 1100 lbs.

STOCK NO.	MODEL NO.	JAW WIDTH (in.)	MAX. JAW OPENING (in.)	JAW DEPTH (in.)	NET WEIGHT (lbs.)
13401	1204	4	4-11/16	1-5/16	18
13402	1206	6	6-3/16	1-13/16	35
13403	1208	8	8-3/16	2	53

CROSS SLIDE DRILL PRESS VISES

- Accurately moves your workpiece horizontal and vertical for precise positioning
- Cast side knobs accurately dial in 0.1 mm increments
- Hardened V-grooved jaws hold round-shaped objects both vertically and horizontally
- Durable construction with fine grain cast iron castings



STOCK NO.	MODEL NO.	JAW WIDTH (in.)	MAX. JAW OPENING (in.)	JAW DEPTH (in.)	X TRAVEL (in.)	Y TRAVEL (in.)	REPLACEMENT JAW/INSERT NO.	NET WEIGHT (lbs.)
11693	CS3	3	3	1-1/8	4-9/10	4-9/10	11693-01	16
11694	CS4	4	4	1-3/8	4-9/10	4-9/10	11694-01	20
11695	CS5	5	5	1-1/2	5-9/10	5-9/10	11695-01	45
11696	CS6	6	6	2	7-9/10	7-9/10	11696-01	59
11698	CS8	8	8	2	7-9/10	7-9/10	11698-01	77

CRADLE STYLE ANGLE DRILL PRESS VISE

- Designed for applications including drilling, tapping and reaming requiring an angle setup
- Cradle design with 90° vertical indexing, scaled in 1° increments
- Side tommy bar allows secure locking at any increment from 0° - 90°
- Pin hard stops at 0°, 15°, 30°, 45°, 60°, 75° and 90° for common applications



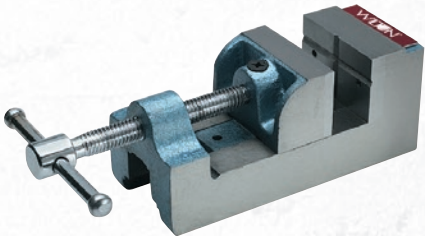
STOCK NO.	MODEL NO.	JAW WIDTH (in.)	MAX. JAW OPENING (in.)	JAW DEPTH (in.)	REPLACEMENT JAW/INSERT NO.	NET WEIGHT (lbs.)
11753	CR3	3	3	1-1/8	11753-01	12
11754	CR4	4	4	1-1/2	11754-01	17



LOW PROFILE DRILL PRESS VISES

- Designed for applications including drilling, tapping and reaming
- Low profile clearance for increased working room on machine table
- Hardened V-grooved jaws hold round-shaped objects both vertically and horizontally
- Durable construction with fine grain cast iron castings and hardened steel vise jaws

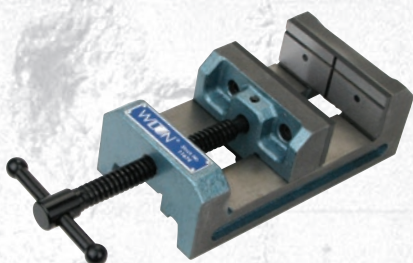
STOCK NO.	MODEL NO.	JAW WIDTH (in.)	MAX. JAW OPENING (in.)	JAW DEPTH (in.)	REPLACEMENT JAW/INSERT NO.	NET WEIGHT (lbs.)
11743	LP3	3	3	1-1/8	11743-01	8
11744	LP4	4	4	1-1/2	11744-01	12
11746	LP6	6	6	2	11746-01	30
11748	LP8	8	8	2	11748-01	50



STANDARD THREE-SIDED DRILL PRESS VISE

- Precision grinding of sides and front side face permits additional mounting positions for drilling, tapping or reaming
- Combines a smooth movable jaw plate with a cross-patterned 90° V-grooved stationary jaw.

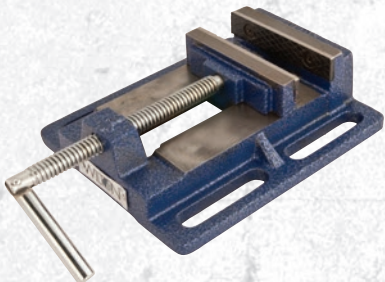
STOCK NO.	MODEL NO.	JAW WIDTH (in.)	MAX. JAW OPENING (in.)	JAW DEPTH (in.)	NET WEIGHT (lbs.)
12800	25	2-1/2	2-9/16	1-1/2	6



INDUSTRIAL DRILL PRESS VISES

- Precision machined on the base, sides and end for accurate and versatile usage
- Durable construction with fine grain cast iron castings and hardened steel jaws
- Precision ground for square and parallel accuracy to ±.0001 per inch
- Hardened V Grooved Jaws hold round shaped objects both vertically and horizontally
- Black oxide coated screw provides consistent clamping force and durability

STOCK NO.	MODEL NO.	JAW WIDTH (in.)	MAX. JAW OPENING (in.)	JAW DEPTH (in.)	REPLACEMENT JAW/INSERT NO.	NET WEIGHT (lbs.)
11674	DI44	4	4	1-1/2	11674-01	10
11676	DI66	6	6	2	11676-01	35



STANDARD DRILL PRESS VISE

- 4" flat drill press vise has easy mounting slots and unique pivot handle design for extra clamping force
- Grooved jaws provide a firm, secure grip on your work material
- Elongated holes for easy fastening onto drill presses or work surfaces

STOCK NO.	MODEL NO.	JAW WIDTH (in.)	MAX. JAW OPENING (in.)	JAW DEPTH (in.)	NET WEIGHT (lbs.)
69997	1203	4	4	1	7

THE SUPERIOR CHOICE FOR WELDERS

At WILTON, we know welding. As the leader in professional-grade workholding equipment for 80 years, we know how important it is to have a versatile and long-lasting line of F-clamps that will resist wear and tear under the most extreme conditions.

SPARK-DUTY™

PAGE 46

CLASSIC

PAGE 48

F-CLAMP KITS

PAGE 50

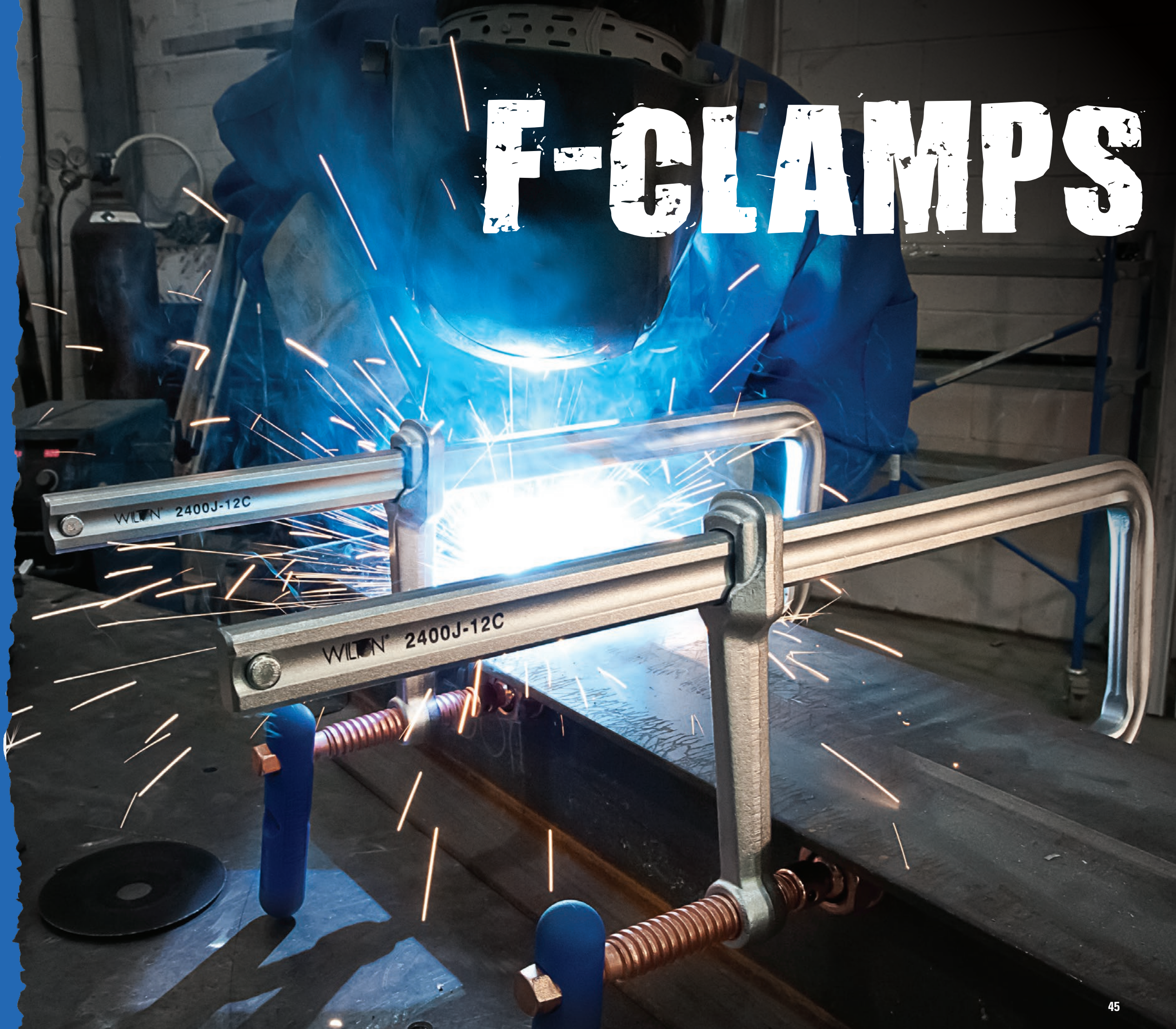
SPARK-DUTY™ SPARE PARTS

PAGE 50

LEVER CLAMPS

PAGE 51

F-CLAMPS



SPARK-DUTY™ COPPER-PLATED F-CLAMPS



FEATURES

SPARK-DUTY COPPER-PLATED SPINDLE:

- Extends the life of the clamp by protecting the spindle and pad from harmful welding spatter

QUICK-TWIST PADS:

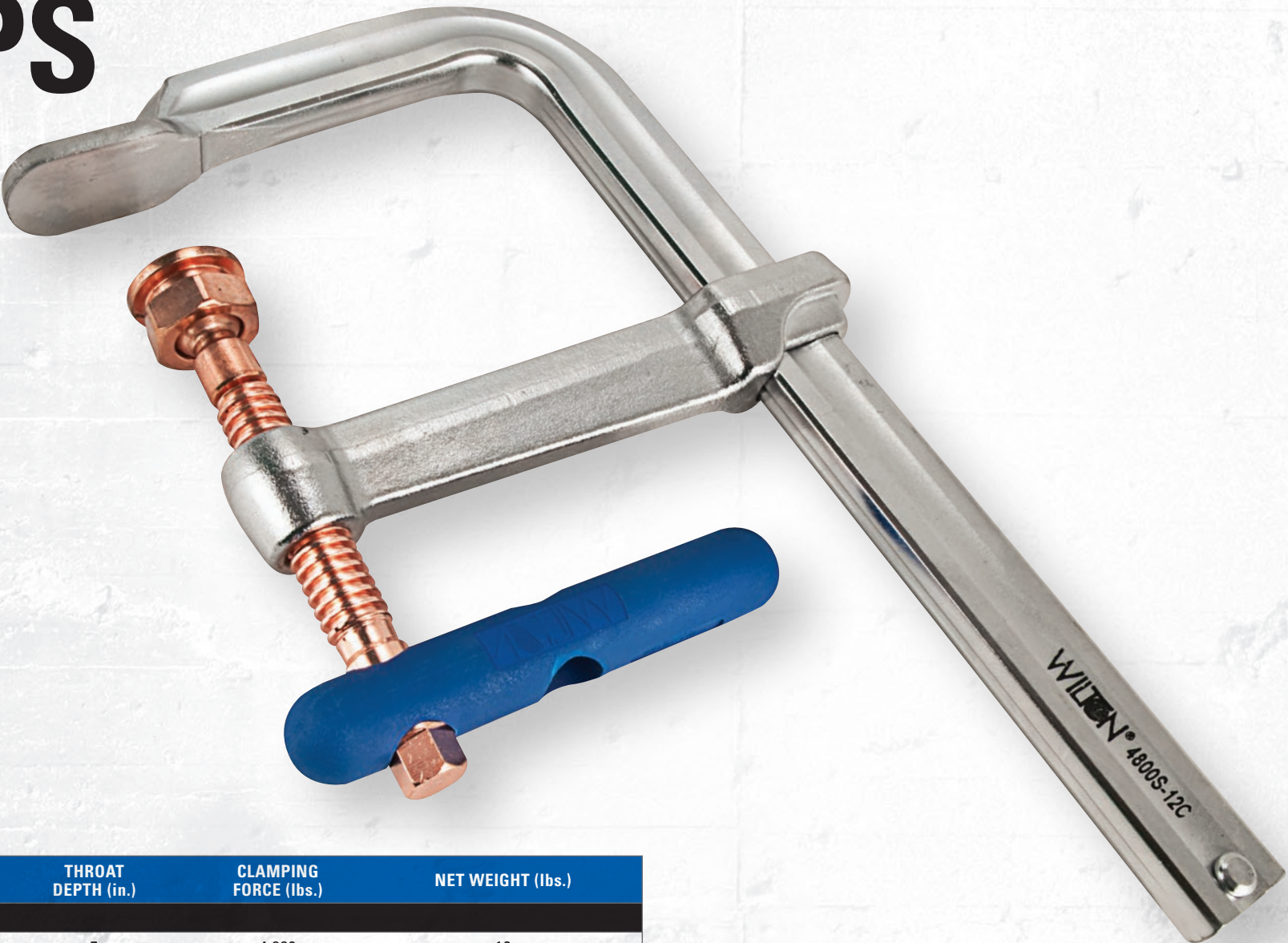
- Simple and quickly replaceable pads in V-groove or serrated surfaces

V-GROOVE PAD

- Included with every clamp, these pads can clamp round objects up to 14" in diameter

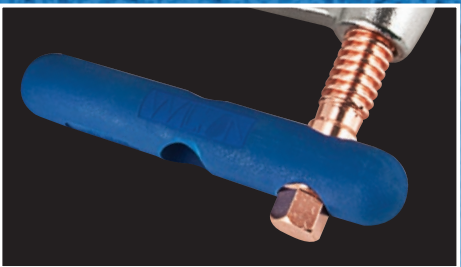
ERGONOMIC WILTON-GRIP®:

- Anti-Fatigue Wilton-Grip® provides comfort during repetitive clamping

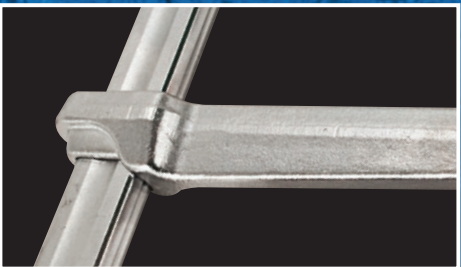


SPECS

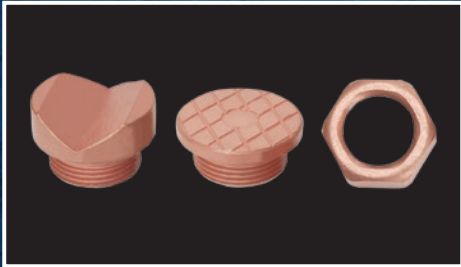
STOCK NO.	MODEL	NOMINAL OPENING CAPACITY (in.)	THROAT DEPTH (in.)	CLAMPING FORCE (lbs.)	NET WEIGHT (lbs.)
SPARK-DUTY™ 4800S SERIES – HEAVY-DUTY					
86500	4800S-12C	12	7	4,880	12
86510	4800S-18C	18	7	4,880	15
86520	4800S-24C	24	7	4,880	16
86530	4800S-36C	36	7	4,880	21
86540	4800S-48C	48	7	4,880	24
SPARK-DUTY™ 2400S SERIES – REGULAR-DUTY					
86410	2400S-12C	12	5-1/2	2,660	7
86420	2400S-16C	16	4-3/4	2,660	7
86430	2400S-20C	20	5-1/2	2,660	8
86440	2400S-24C	24	4-3/4	2,660	9



ERGONOMIC WILTON-GRIP™



DROP-FORGED ARM



QUICK-TWIST AND V-GROOVE PADS

CLASSIC SERIES F-CLAMPS



SPECS

STOCK NO.	MODEL NO.	NOMINAL OPENING CAPACITY (in.)	THROAT DEPTH (in.)	CLAMPING FORCE (lbs.)	NET WEIGHT (lbs.)
CLASSIC HEAVY-DUTY F-CLAMPS					
86640	GSM20	8	5-1/2	2,660	6
86650	GSM30	12	5-1/2	2,660	7
86660	GSM40	16	4-3/4	2,660	7
86670	GSM50	20	5-1/2	2,660	8
86680	GSM60	24	4-3/4	2,660	9
CLASSIC REGULAR-DUTY F-CLAMPS					
86200	1800S-8	8	4-3/4	1,800	4
86210	1800S-12	12	5-1/2	1,800	5
86220	1800S-18	18	4-3/4	1,800	6
86230	1800S-24	24	4-3/4	1,800	6
CLASSIC LIGHT-DUTY F-CLAMPS					
86100	660S-8	8	4	660	2
86110	660S-12	12	4	660	2
86120	660S-18	18	4	660	3
86130	1200S-8	8	4-3/4	1,200	2
86140	1200S-12	12	4-3/4	1,200	3
86150	1200S-18	18	4-3/4	1,200	4
86160	1200S-24	24	4-3/4	1,200	4
CLASSIC HEAVY-DUTY F-CLAMPS					
86000	MMS-4	4	2-1/4	400	1
86010	MMS-8	8	2-1/4	400	1
86020	MMS-12	12	2-1/4	400	1
LEVER CLAMPS					
86800	LC4	4	2-3/8	350	2
86810	LC8	8	4	770	3
86820	LC12	12	5-1/2	1,100	3
86830	LC20	20	4-3/4	1,200	4

REPLACEMENT PADS

STOCK NO.	PLAIN PAD STOCK NO.	SERRATED PAD STOCK NO.	V PAD STOCK NO.	NUT STOCK NO.	JOINT W/ SPRING PIN STOCK NO.	SPINDLE AND HANDLE W/ SPRING PIN STOCK NO.
86640	2909102A	2909202A	2909302A	1701702A	1701502A	1701602B
86650	2909102A	2909202A	2909302A	1701702A	1701502A	1701602B
86660	2909102A	2909202A	2909302A	1701702A	1701502A	1701602B
86670	2909102A	2909202A	2909302A	1701702A	1701502A	1701602B
86680	2909102A	2909202A	2909302A	1701702A	1701502A	1701602B



FEATURES

BLACK OXIDE SPINDLE:

- Resists wear and tear while impeding rust

STURDY TOMMY BAR:

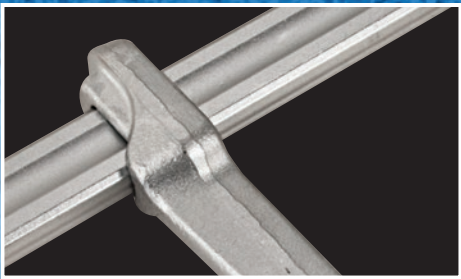
- Engineered for durability and comfort

DROP-FORGED ARM:

- Provides minimal flex under heavy workloads

IDEAL FOR

- Fabrication
- Welding
- Repetitive Clamping



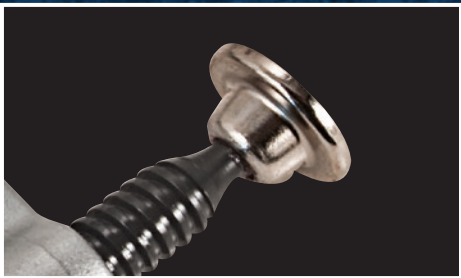
FORGED SLIDE ARM



STURDY TOMMY BAR



REPLACEABLE PAD
(HEAVY-DUTY ONLY)



OSCILLATING PAD
(REGULAR, LIGHT AND MINI ONLY)

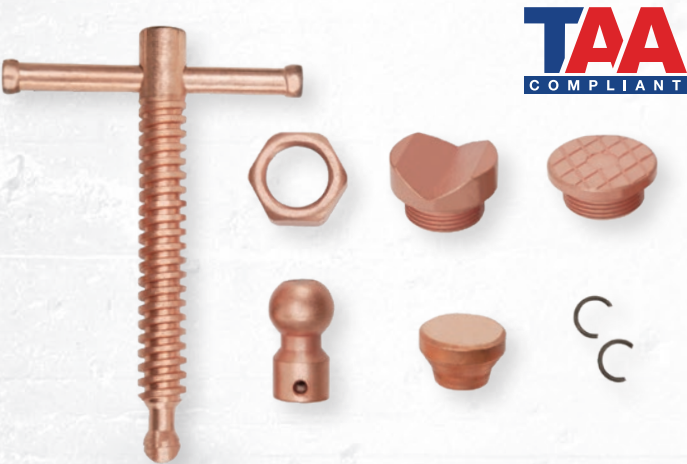
CLASSIC SERIES F-CLAMP KIT

11116

STOCK NO.	DESCRIPTION	QTY.
11116	Classic Series F-Clamp Kit	1
KIT CONTENTS		
86000	MMS-4, 4" Mini F-Clamp	1
86010	MMS-8, 8" Mini F-Clamp	1
86200	1800S-8, 8" Regular Duty F-Clamp	1
86210	1800S-12, 12" Regular Duty F-Clamp	1



SPARK-DUTY™ F-CLAMP SPARE PARTS



STOCK NO.	MODEL NO.	WILTON GRIP STOCK NO.	PLAIN PAD STOCK NO.	SERRATED PAD STOCK NO.	V-PAD STOCK NO.	NUT STOCK NO.	JOINT WITH SPRING PIN STOCK NO.	SPINDLE AND HANDLE WITH SPRING PIN STOCK NO.
SPARK-DUTY™ 4800S SERIES								
86500	4800S-12C	1713561	2909102	2909202	2909302	1701702	1701502	1701603
86510	4800S-18C	1713561	2909102	2909202	2909302	1701702	1701502	1701603
86520	4800S-24C	1713561	2909102	2909202	2909302	1701702	1701502	1701603
86530	4800S-36C	1713561	2909102	2909202	2909302	1701702	1701502	1701603
86540	4800S-48C	1713561	2909102	2909202	2909302	1701702	1701502	1701603
SPARK-DUTY™ 2400S SERIES								
86410	2400S-12C	1713551	2909102	2909202	2909302	1701702	1701502	1701602
86420	2400S-16C	1713551	2909102	2909202	2909302	1701702	1701502	1701602
86430	2400S-20C	1713551	2909102	2909202	2909302	1701702	1701502	1701602
86440	2400S-24C	1713551	2909102	2909202	2909302	1701702	1701502	1701602

HEAVY-DUTY LEVER CLAMPS



FEATURES

RATCHETING DESIGN:

- Allows easy, spindle-free operation

QUICK-TRIGGER RELEASE:

- Release clamp pressure with one squeeze

WILTON® BLUE ALUMINUM HANDLE:

- Ergonomically designed for repetitive clamping and resistant to heat

SELF CENTERING PAD:

- Centers on workpiece for a sturdy hold



SPECS

STOCK NO.	MODEL	NOMINAL OPENING CAPACITY (in.)	THROAT DEPTH (in.)	CLAMPING FORCE (lbs.)	NET WEIGHT (lbs.)
86800	LC4	4	2-3/8	350	2
86810	LC8	8	4	770	3
86820	LC12	12	5-1/2	1,100	3
86830	LC20	20	4-3/4	1,200	4



QUICK RATCHETING DESIGN



SELF CENTERING PAD



ERGONOMIC HANDLE

A HISTORY OF HIGH-QUALITY CLAMPING SOLUTIONS

Forged during the automotive boom of the 1950s, WILTON's expansive and versatile line of C-clamps will tightly secure parts for all your clamping needs—whether assembly, fastening, gluing, or welding.

BRUTE FORCE

PAGE 54

CLASSIC

PAGE 56

SPARK-DUTY™

PAGE 57

REPLACEMENT PARTS

PAGE 61

CARRIAGE

PAGE 62

JUNIOR

PAGE 64

C-CLAMPS



BRUTE FORCE 0-SERIES C-CLAMPS



FEATURES

HIGHEST CLAMPING FORCE:

- Ranging up to 40,000 lbs., these clamps stand up to the demands of the heaviest industrial applications

SPINDLE:

- Full-length, machined from a single piece of square, cold drawn steel, hardened and tempered

SQUARE SPINDLE HEAD:

- Stands up to heavy wrench tightening use, including both hand and torque wrench

IDEAL FOR

- Heavy Construction
- Bridge Building
- Heavy Fabrication
- Ship Building

SPECS

STOCK NO.	MODEL NO.	NOMINAL OPENING CAPACITY (in.)	THROAT DEPTH (in.)	CLAMPING FORCE (lbs.)	SPINDLE SIZE (in.)	NET WEIGHT (lbs.)
14518	1 F.C.	0 - 1-3/8	1-1/16	5,600	7/16	1
14527	1-1/2 F.C.	0 - 1-3/4	1-7/16	8,750	5/8	2
14536	2 F.C.	0 - 2-5/16	1-7/8	12,500	3/4	3
14545	3 F.C.	0 - 3-7/16	2-1/2	16,250	7/8	7
14554	4 F.C.	0 - 4-1/2	2-7/8	20,000	1	10
14563	5 F.C.	0 - 5-3/8	3-1/8	23,800	1	14
14572	6 F.C.	0 - 6-7/16	3-1/2	27,500	1-1/8	19
14581	8 F.C.	0 - 8-1/2	3-7/8	31,250	1-1/4	26
14590	10 F.C.	0 - 10-7/16	4-1/8	35,000	1-1/4	37
14599	12 F.C.	0 - 12-3/8	4-1/2	40,000	1-1/4	44

BRUTE FORCE 100-SERIES C-CLAMPS



FEATURES

SPINDLE:

- Full-length, machined from a single piece of square, cold drawn steel, hardened and tempered

SQUARE HEAD HANDLE:

- Designed for maximum torque and flexible usage
- Can be tightened by hand or wrench

IDEAL FOR

- Heavy Construction
- Mining and Extraction
- Machine Tool Fixtures
- Press Work

SPECS

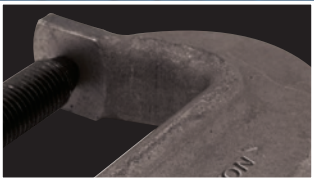
STOCK NO.	MODEL NO.	NOMINAL OPENING CAPACITY (in.)	THROAT DEPTH (in.)	CLAMPING FORCE (lbs.)	SPINDLE SIZE (in.)	NET WEIGHT (lbs.)
14128	103	0 - 2-15/16	2	8,750	5/8	3
14142	104	0 - 3-3/4	2-3/8	10,000	3/4	4
14156	106	7/8 - 5-3/4	2-1/2	11,250	3/4	6
14170	108	2-11/16 - 7-3/4	2-5/8	12,500	3/4	8
14184	110	5-1/16 - 9-7/8	2-11/16	13,750	3/4	9
14198	112	7 - 11-3/4	2-7/8	15,000	3/4	12



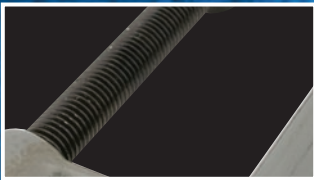
FULL-LENGTH
SPINDLE



SQUARE SPINDLE
HEAD



UP TO 40,000 LBS.
OF PURE CLAMPING
FORCE



HARDENED AND TEMPERED
STEEL SPINDLE



REPLACEABLE
PERMA-PADS



SQUARE HEAD
HANDLE

CLASSIC 400-SERIES C-CLAMPS



FEATURES

DROP-FORGED:

- Manufactured for greater strength in standard applications

ACME-ROLLED SPINDLE:

- Threads provide continuous smooth operation for faster clamping action and maximum strength

BLACK OXIDE COATING:

- Spindles and PERMA-PADS® are treated to resist corrosion

V-GROOVED ANVIL:

- Feature allows secure holding of all materials including rounds, squares and flats

IDEAL FOR

- Steel Fabrication
- Industrial Maintenance
- Production
- Repair Operations



SPECS

STOCK NO.	MODEL NO.	NOMINAL OPENING CAPACITY (in.)	THROAT DEPTH (in.)	CLAMPING FORCE (lbs.)	SPINDLE SIZE (in.)	NET WEIGHT (lbs.)
CLASSIC 400 SERIES™						
14214	402	0 – 2-1/8	2-1/4	3,500	9/16	2
14228	403	0 – 3	2-1/2	3,500	9/16	2
14242	404	0 – 4-1/4	3-1/4	6,200	3/4	4
14256	406	0 – 6-1/16	4-1/8	6,600	3/4	5
14270	408	0 – 8-1/4	5	6,900	3/4	8
14284	410	2 – 10-1/8	6	8,000	3/4	11
14298	412	2 – 12-1/4	6-5/16	9,300	7/8	14
CLASSIC 400 SERIES™ HI-VIS SAFETY						
14300	402-SF	0 – 2-1/8	2-1/4	3,500	9/16	1
14301	403-SF	0 – 3	2-1/2	3,500	9/16	2
14302	404-SF	0 – 4-1/4	3-1/4	6,200	3/4	4
14303	406-SF	0 – 6-1/16	4-1/8	6,600	3/4	5
14305	408-SF	0 – 8-1/4	5	6,900	3/4	7
14306	410-SF	2 – 10-1/8	6	8,000	3/4	11
14307	412-SF	2 – 12-1/4	6-5/16	9,300	7/8	15

NOTE: HI-VIS CONFORMS TO OSHA SAFETY COLOR STANDARD FOR PHYSICAL REGULATION #1910.144

SPARK-DUTY™ 400P/HI-VIS C-CLAMPS



FEATURES

DROP-FORGED:

- Manufactured for greater strength in standard applications

V-GROOVED ANVIL:

- Feature allows secure holding of all materials including rounds, squares and flats

ACME-ROLLED SPINDLE:

- Threads provide continuous smooth operation for faster clamping action and maximum strength

COPPER-PLATED:

- Spindles and pads are copper-plated to provide resistance to welding spatter and corrosion

IDEAL FOR

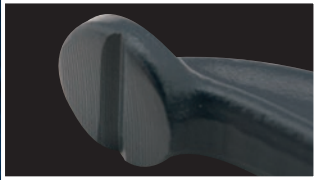
- Steel Fabrication
- Industrial Welders



SPECS

STOCK NO.	MODEL NO.	NOMINAL OPENING CAPACITY (in.)	THROAT DEPTH (in.)	CLAMPING FORCE (lbs.)	SPINDLE SIZE (in.)	NET WEIGHT (lbs.)
SPARK-DUTY 400P						
14215	402-P	0-2-1/8	2-5/8	3,500	9/16	2
14229	403-P	0-3	2-1/2	3,500	5/8	2
14243	404-P	0-4-1/4	3-1/4	6,200	3/4	4
14257	406-P	0-6-1/16	4-1/8	6,600	3/4	5
14271	408-P	0-8-1/4	5	6,900	3/4	8
14285	410-P	2-10-1/8	6	8,000	3/4	10
14299	412-P	2-12-1/4	6-5/16	9,300	7/8	15
SPARK-DUTY 400CS HI-VIS						
20479	H402CS	0 – 2	2	3,500	1/2	2
20481	H403CS	0 – 3	2-3/8	3,500	5/8	2
20483	H404CS	0 – 4	2-3/4	6,200	3/4	3
20484	H406CS	0 – 6	3-5/8	6,600	3/4	5
20485	H408CS	0 – 8	4-1/2	6,900	3/4	8
20486	H410CS	2 – 10	5-3/8	8,000	7/8	12
20487	H412CS	2 – 12	5-3/4	9,500	7/8	15

NOTE: HI-VIS CONFORMS TO OSHA SAFETY COLOR STANDARD FOR PHYSICAL HAZARDS REGULATION #1910.144



V-GROOVED
ANVIL



DROP-FORGED
FRAME



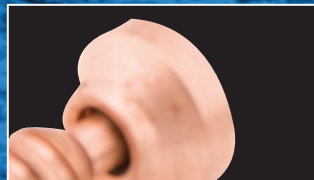
REPLACEABLE
PERMA-PADS



V-GROOVED ANVIL



HI-VIS SAFETY
YELLOW FRAME



COPPER-PLATED SPINDLE
AND PERMA-PADS®

4400 & 800 SERIES C-CLAMPS

FEATURES

SQUARE THROAT DESIGN (4400 SERIES):

- Up to 37% more throat depth than standard deep throat C-Clamps

PERMA-PADS®:

- Exclusive black oxide-coated pad swivels and adapts to angular work pieces for tighter holding

REPLACEABLE PARTS:

- Both the spindle and PERMA-PADS® are replaceable and can be individually ordered

DROP-FORGED:

- Manufactured for greater strength in standard applications

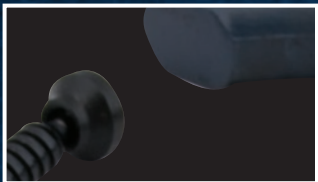
IDEAL FOR

- Steel Fabrication
- Industrial Maintenance



SPECS

STOCK NO.	MODEL NO.	NOMINAL OPENING CAPACITY (in.)	THROAT DEPTH (in.)	CLAMPING FORCE (lbs.)	SPINDLE SIZE (in.)	NET WEIGHT (lbs.)
4400 SERIES SQUARE THROAT						
14350	4404	0 – 4	4	4,100	3/4	5
14375	4406	0 – 6	5	5,400	3/4	6
14400	4408	2 – 8	6	5,900	3/4	10
800 SERIES STANDARD DEPTH						
14714	802	0-2	1-13/16	2,700	9/16	1
14728	803	0-3	1-15/16	3,000	9/16	2
14742	804	0-4	2-5/16	3,700	5/8	2
14756	806	0-6	2-15/16	4,500	5/8	4
14770	808	0-8	3-7/16	5,200	3/4	7
14784	810	1-1/2-10	3-3/4	6,000	3/4	8
14798	812	1-1/8-12	3-7/8	8,000	3/4	15



PERMA-PADS®

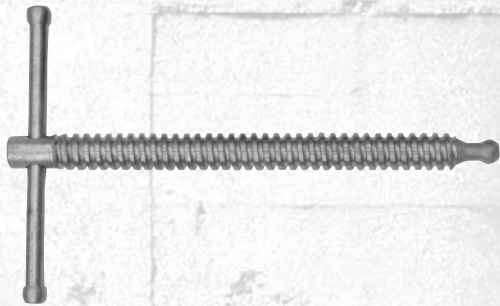
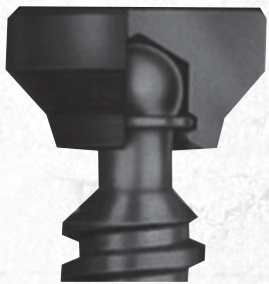


SQUARE THROAT AND
STANDARD DEPTH



BLACK OXIDE
COATING

PREMIUM C-CLAMP FEATURES



FRAME GEOMETRY

- Wilton engineers develop the maximum form and function potential of each clamp style through the technology of computer aided design and research
- As a result, today's C-clamp frame geometry allows higher proof test strength, with greater throat depth and lower overall weight
- These features translate into a clamp that is easier to handle, reducing fatigue
- Optimum hardening of the frames on Wilton 400 Series is achieved through a precisely controlled heat-treating process
- Finally, Wilton clamps are guaranteed against breakage during normal use

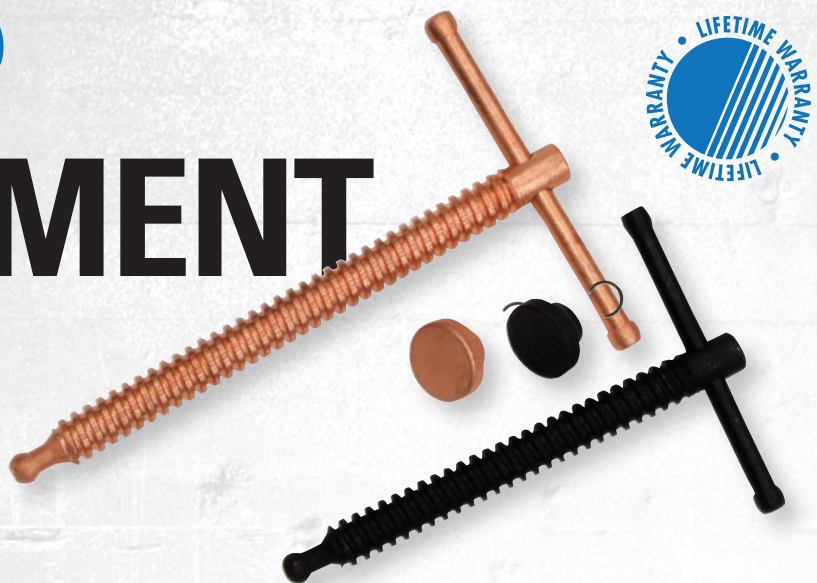
PERMA-PAD®

- Wilton exclusive Perma-Pads, swivel and pivot
- A steel retaining ring holds the pad in place on the ball end of the screw, allowing it to swivel and exert even pressure on a clamped part
- Perma-Pad swivels are also guaranteed never to come off during normal usage
- This design outperforms crimped pads on ordinary clamps which may pop-off during use. Spindles and Perma-Pads can be easily repaired and replaced in the field when damaged by grinding or welding

ACME THREADED SPINDLE

- Wilton 400, 4400 and 800 Series are heat-treated carbon steel alloy steel and precision cut with a single lead ACME thread
- All 540A Series clamps also feature ACME thread. The 4" and larger sizes of the 140/Junior/Super Junior Series include this feature as well, while the 3" and smaller sizes have standard ISO metric thread.
- The benefit of ACME thread is the continuous smooth operation of your clamp and 25% faster action than rolled threaded spindles
- 100 and O Series models utilize spindles fabricated of square carbon steel with UNC Unified coarse pitch thread. The spindles are heat treated to HRC 22-27

C-CLAMP REPLACEMENT PARTS



STOCK NO.	MODEL NO.	SPINDLE ASSEMBLY STOCK NO.	PERMA-PAD® WITH RING STOCK NO.
BRUTE FORCE O-SERIES			
14518	1 F.C.	20203-35	N/A
14527	1-1/2 F.C.	20203-35	N/A
14536	2 F.C.	07142-35	N/A
14545	3 F.C.	07161-35	N/A
14554	4 F.C.	07147-35	N/A
14563	5 F.C.	07162-35	N/A
14572	6 F.C.	07149-35	N/A
14581	8 F.C.	07150-35	N/A
14590	10 F.C.	07151-35	N/A
14599	12 F.C.	07152-35	N/A
BRUTE FORCE 100 SERIES			
14128	103	1700020	N/A
14142	104	1700030	2901310-1
14156	106	1700030	2901310-1
14170	108	1700030	2901310-1
14184	110	1700030	2901310-1
14198	112	1700030	2901310-1
CLASSIC 400 SERIES			
14214	402	1701080	2901300
14228	403	1701160	2901300
14242	404	1700150	2901310
14256	406	1700170	2901310
14270	408	1700190	2901310
14284	410	1700190	2901310
14298	412	1700220	2901310
CLASSIC 400 SERIES HI-VIS SAFETY			
14300	402-SF	1701080	2901300
14301	403-SF	1701160	2901300
14302	404-SF	1700150	2901310
14303	406-SF	1700170	2901310
14305	408-SF	1700190	2901310
14306	410-SF	1700190	2901310
14307	412-SF	1700220	2901310

STOCK NO.	MODEL NO.	SPINDLE ASSEMBLY STOCK NO.	PERMA-PAD® WITH RING STOCK NO.
SPARK-DUTY 400P			
14215	402-P	1701090	2901330
14229	403-P	1701110	2901330
14243	404-P	1700160	2901340
14257	406-P	1700180	2901340
14271	408-P	1700210	2901340
14285	410-P	1700210	2901340
14299	412-P	1700230	2901340
SPARK-DUTY 400CS HI-VIS SAFETY			
20479	H402CS	1701090	2901330
20481	H403CS	1701110	2901330
20483	H404CS	1700160	2901340
20484	H406CS	1700180	2901340
20485	H408CS	1700210	2901340
20486	H410CS	1700210	2901340
20487	H412CS	1700230	2901340
4400 SERIES DEEP THROAT			
14350	4404	1700150	2901310
14375	4406	1700170	2901310
14400	4408	1700170	2901310
800 SERIES STANDARD DEPTH			
14714	802	1701080	2907920
14728	803	1701160	2907920
14742	804	1700750	2901320
14756	806	1700740	2901320
14770	808	1700190	2907930
14784	810	1700190	2907930
14798	812	1700630	2907930

CLASSIC 400 SERIES COLUMBIAN ECONOMY C-CLAMPS



FEATURES

- DROP-FORGED:**
 - Manufactured for greater strength in standard applications
- BLACK OXIDE COATING:**
 - Spindles and pads are treated to resist corrosion
- PATENTED DESIGN:**
 - Frame geometry allows for maximum strength with greater throat depth and lower weight

IDEAL FOR

- Steel Fabrication
- Industrial Maintenance
- Production
- Repair Operations

SPECS

STOCK NO.	MODEL NO.	NOMINAL OPENING CAPACITY (in.)	THROAT DEPTH (in.)	CLAMPING FORCE (lbs.)	SPINDLE SIZE (in.)	NET WEIGHT (lbs.)
20301	H402	0 – 2	2	3,500	1/2	2
20302	H403	0 – 3	2-3/8	3,500	5/8	2
20303	H404	0 – 4	2-3/4	6,200	3/4	3
20304	H406	0 – 6	3-5/8	6,600	3/4	5
20305	H408	0 – 8	4-1/2	6,900	3/4	8
20306	H410	0 – 10	5-3/8	8,000	7/8	12
20307	H412	0 – 12	5-3/4	9,500	7/8	14



DROP-FORGED
CONSTRUCTION



OSCILLATING
HEAD



BLACK OXIDE
COATING

540A SERIES CARRIAGE C-CLAMPS



FEATURES

DUCTILE IRON FRAMES:

- Rugged frames designed for maximum clamping force

CLASSIC DESIGN:

- Most popular C-Clamp for over 50 years

BLACK OXIDE COATING:

- Spindles and pads are treated to resist corrosion

OSCILLATING HEAD:

- High-quality steel pad is built to last and provide firm gripping action on angular surfaces

IDEAL FOR

- Light Industrial
- Home Craftsman
- Woodworking
- Repair



SPECS

STOCK NO.	MODEL NO.	NOMINAL OPENING CAPACITY (in.)	THROAT DEPTH (in.)	CLAMPING FORCE (lbs.)	SPINDLE SIZE (in.)	NET WEIGHT (lbs.)
22001	540A-2-1/2	0 – 2-1/2	1-3/4	1,110	1/2	1
22002	540A-3	0 – 3	1-7/8	1,800	1/2	2
22003	540A-4	0 – 4	2-1/16	2,150	5/8	2
22004	540A-5	0 – 5	2-1/2	2,250	5/8	2
22005	540A-6	0 – 6	2-3/4	2,450	5/8	3
22006	540A-8	0 – 8	3-1/4	2,750	3/4	5
22007	540A-10	0 – 10	3-5/8	2,850	7/8	7
22008	540A-12	0 – 12	3-5/8	2,850	7/8	9
22009	540A-14	0 – 14	3-3/4	2,850	7/8	10

140 SERIES CARRIAGE C-CLAMPS



FEATURES

DUCTILE IRON FRAMES:

- Rugged frames designed for maximum clamping force

BLACK OXIDE COATING:

- Spindle and pads are treated to resist corrosion

DEEP REACH OPTION:

- Provides maximum depth for applications requiring increased throat capacity

IDEAL FOR

- Light Industrial
- Home Craftsman
- Woodworking
- Repair



SPECS

STOCK NO.	MODEL NO.	NOMINAL OPENING CAPACITY (in.)	THROAT DEPTH (in.)	CLAMPING FORCE (lbs.)	SPINDLE SIZE (in.)	NET WEIGHT (lbs.)
140 SERIES STANDARD CARRIAGE						
41411	141C	0 – 1	1-1/16	645	1/4	1
41416	141-1/2C	0 – 1-1/2	1-1/2	820	5/16	1
41421	142C	0 – 2	1-1/8	800	5/16	1
41423	1422C	0 – 2-1/2	1-7/16	850	3/8	1
41426	142-1/2C	0 – 2-1/2	2-1/2	1,005	3/8	1
41405	143C	0 – 3	2	1,430	3/8	1
41406	144C	0 – 4	2-3/4	1,535	1/2	1
41407	145C	0 – 5	3	1,225	5/8	2
41408	146C	0 – 6	3-1/4	1,400	5/8	3
41409	148C	0 – 8	4	1,700	3/4	4
DEEP REACH CARRIAGE						
42510	251	0 – 1	3	350	1/4	1
42520	252	0 – 2	3-1/2	450	5/16	1
42525	252-1/2	0 – 2-1/2	4	600	3/8	1
42530	253	0 – 3	4-1/2	700	7/16	2
XTRA-DEEP REACH CARRIAGE						
42450	245	2-1/2	4-3/4	1,600	7/16	2
42460	246	2-1/2	6-1/4	1,600	7/16	2



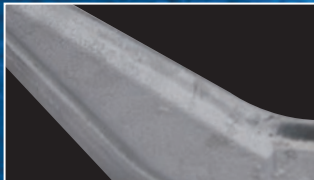
OSCILLATING HEAD



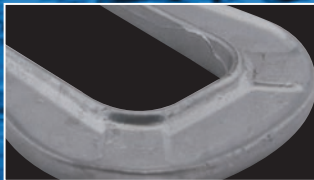
SLIDING CROSS
PIN HANDLE



DUCTILE IRON FRAMES



DUCTILE IRON FRAMES



EXTRA-DEEP REACH
DESIGN AVAILABLE



BLACK OXIDE COATING

JUNIOR & SUPER JUNIOR C-CLAMPS



FEATURES

- Super-Junior® clamps are forged steel with heat treated frames to provide a much stronger clamp than pressed steel or malleable clamps
- Steel screws are zinc plated for longer life

NYLON CAPS / FOOT INSERTS (566N/568N JUNIOR):

- Ductile / malleable iron castings are desired for close work in pattern and mold making
- Used extensively in the aircraft/aerospace industry because of their weight to strength ratio
- Nylon cap on the tip as well as nylon inserts are securely fixed to the foot of the clamp

IDEAL FOR

- Light-Duty Clamping
- Pattern and Mold Making
- Aircraft/Aerospace
- Industry

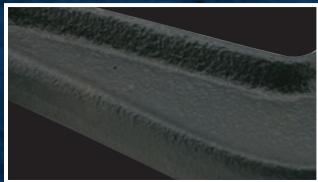


SPECS

STOCK NO.	MODEL NO.	NOMINAL OPENING CAPACITY (in.)	THROAT DEPTH (in.)	CLAMPING FORCE (lbs.)	SPINDLE SIZE (in.)	NET WEIGHT (lbs.)
SUPER JUNIOR®						
21301	50	0 - 1	1	500	1/4	1
21302	51	0 - 1	1-1/2	500	1/4	1
21303	52	0 - 1-1/4	1-1/4	800	1/4	1
21304	53	0 - 1-1/2	1-1/2	850	5/16	1
21305	54	0 - 2	1-1/4	875	5/16	1
21306	55	0 - 3	1-3/8	1,100	3/8	1
21307	56	0 - 2-1/2	2-1/2	850	3/8	1
566/588 JUNIOR®						
22105	H566	0 - 1-1/4	1-1/4	450	1/4	1
22115	H566N	0 - 1-1/4	1-3/16	550	1/4	1
22116	H568N	0 - 2-1/2	2-5/16	550	3/4	1



ZINC-PLATED SCREW



FORGED STEEL FRAMES



NYLON CAPS (22115 & 22116)

C-CLAMP KITS

SPARK-DUTY™ 400CS HI-VIS C-CLAMP KIT 11114

STOCK NO.	CONTENTS	QTY.
11114	Spark-Duty 400CS Hi-VIS C-Clamp Kit	1
KIT CONTENTS		
20479	H402CS, 0" - 2" Jaw Opening, 2" Throat Depth	1
20483	H404CS, 0" - 4" Jaw Opening, 2-3/4" Throat Depth	1
20484	H406CS, 0" - 6" Jaw Opening, 3-5/8" Throat Depth	1
20485	H408CS, 0" - 8" Jaw Opening, 4-1/2" Throat Depth	1



540A SERIES CARRIAGE C-CLAMP KIT 11115

STOCK NO.	CONTENTS	QTY.
11115	540A Series Carriage C-Clamp Kit	1
KIT CONTENTS		
22001	540A-2-1/2, 0" - 2-1/2" Jaw Opening, 1-3/4" Throat Depth	1
22003	540A-4, 0" - 4" Jaw Opening, 2-1/16" Throat Depth	1
22005	540A-6, 0" - 6" Jaw Opening, 2-3/4" Throat Depth	1
22006	540A-8, 0" - 8" Jaw Opening, 3-1/4" Throat Depth	1



140 SERIES 10 PC. C-CLAMP KIT 11117

STOCK NO.	DESCRIPTION	QTY.
11117	140 Series 10 pc. C-Clamp Kit	1
KIT CONTENTS		
41408	146C, 140 Series C-Clamp 0" - 6"	2
41406	144C, 140 Series C-Clamp 0" - 4"	4
41421	142C, 140 Series C-Clamp 0" - 2"	4



CLAMPS DESIGNED FOR YOUR UNIQUE APPLICATIONS

Our Specialty line of Clamps includes the Spark-Duty Welder's Shoe Clamp, Heavy Duty Angle Clamps and Regular Duty I Bar Clamps.

ANGLE CLAMPS
PAGE 68

**SPARK-DUTY™ WELDER'S
SHOE CLAMP**
PAGE 69

**REGULAR DUTY
I-BAR CLAMPS**
PAGE 69

SPECIALTY CLAMPS

A welder wearing a black helmet and a brown leather apron is working on a metal piece. A large, dense spray of bright orange sparks is erupting from the work area, partially obscuring the welder's face. The background is a dark, industrial setting with some blue lighting. The text "SPECIALTY CLAMPS" is overlaid in large, white, distressed font on the right side of the image.

ANGLE CLAMPS

FEATURES

HEAVY-DUTY STEEL:

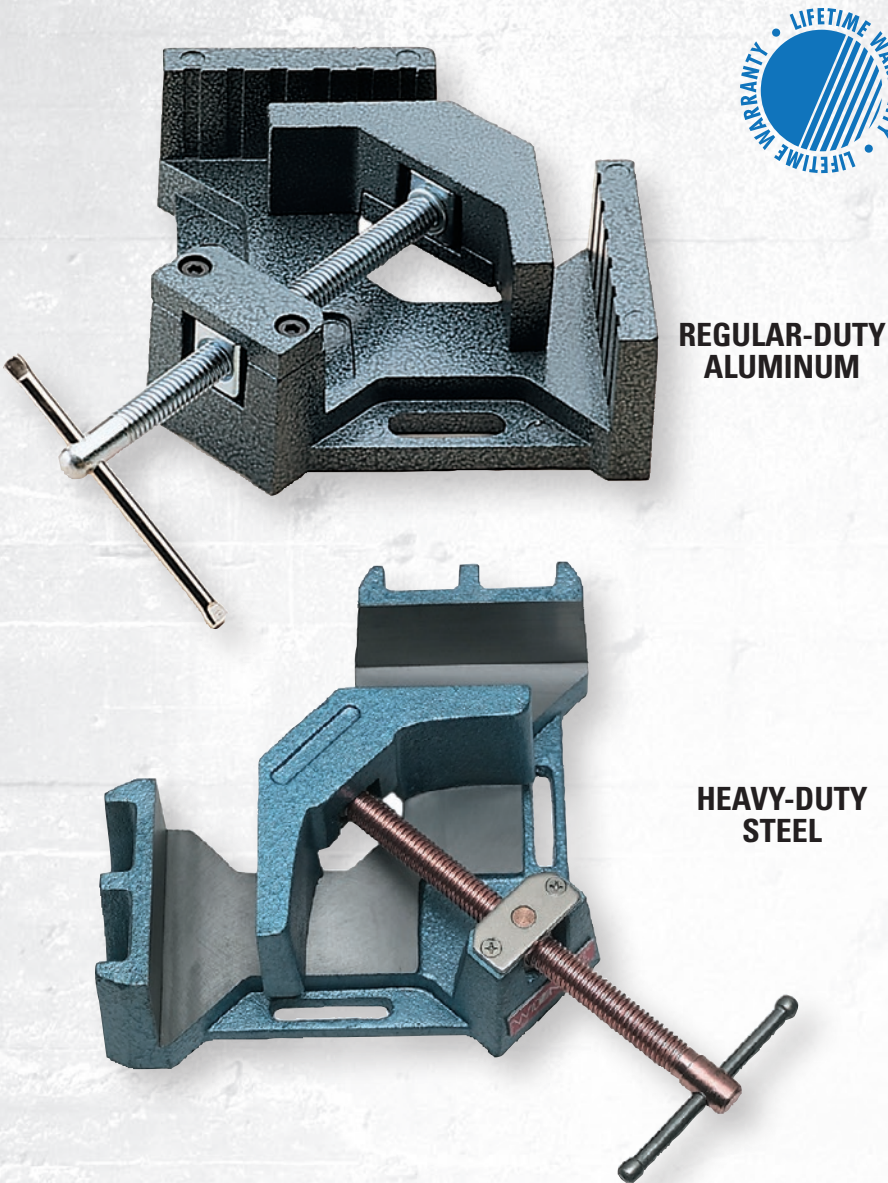
- The 90° angle clamp is made of high quality cast iron
- The copper plated spindle pivots allowing the movable jaw to securely grip parts at 90°
- Slotted holes are provided in the base for convenient workbench mounting
- Work surfaces, including base, are milled for added precision
- Designed with self-centering jaws to quickly adjust to work pieces

REGULAR DUTY ALUMINUM:

- Designed with self-centering jaws to quickly adjust to work pieces
- Squarely machined sides and base provide secure and precise clamping
- Oblong holes in base for use in mounting clamp to workbench

IDEAL FOR

- Welding
- Woodworking
- Light Industrial



REGULAR-DUTY ALUMINUM

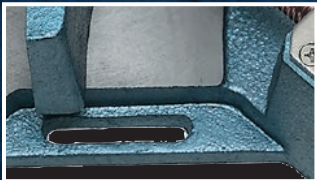
HEAVY-DUTY STEEL

SPECS

STOCK NO.	MODEL NO.	CAPACITY MITER (in.)	JAW HEIGHT (in.)	JAW LENGTH (in.)	NET WEIGHT (lbs.)
HEAVY-DUTY STEEL ANGLE CLAMPS					
64000	AC-325	3-11/32	1-3/8	4-1/8	11
64002	AC-326	4-3/8	2-3/8	4-1/8	21
REGULAR-DUTY ALUMINUM ANGLE CLAMP					
44324	AC-324	2-3/4	1-3/8	2-1/4	3



90° CLAMPING



VERSATILE MOUNTING SLOTS



COPPER-PLATED SPINDLE

SPARK-DUTY WELDER'S SHOE CLAMP



FEATURES

SPARK-DUTY COPPER-PLATED SPINDLE:

- Extends the life of the clamp by protecting the spindle and pad from harmful welding spatter

HEAVY-DUTY SHOE:

- Bolt or weld shoe to workstation for maximum stability

DROP-FORGED ARM:

- Slides up and down robust rail for rapid loading

IDEAL FOR

- Production Work
- Repetitive Welding
- High-Efficiency

SPECS

STOCK NO.	NOMINAL OPENING CAPACITY (in.)	THROAT DEPTH (in.)	NOMINAL RAIL SIZE (in.)	CLAMPING FORCE (LBS)	NOMINAL SPINDLE DIAMETER (in.)	NET WEIGHT (lbs.)
63295	8-1/2	5-1/2	1-3/16 x 9/16	2,600	3/4	8

REPLACEMENT PART

STOCK NO.	DESCRIPTION	NET WEIGHT (lbs.)
63299	Replacement Shoe	1.7



FORGED SLIDE ARM



COPPER-PLATED SPINDLE

REGULAR DUTY I BAR CLAMPS



FEATURES

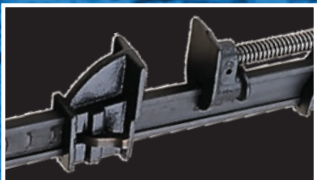
- A rapid-acting powerful clamp designed and constructed for hard, everyday production work
- Patented, quick-action, no-slip clutches are 3/4" apart and formed in the web for greater bar strength
- High-strength ductile slide cannot slip or bind, easily released
- Steel handle, with comfortable wood crank handle for fast clamping
- Bar dimension is 7/16" x 1-1/2" x 5/32", screw diameter is 5/8"

SPECS

STOCK NO.	BAR LENGTH (FT.)	THROAT DEPTH (in.)	CLAMP FACE (in.)	CLAMPING FORCE (LBS)	NET WEIGHT (lbs.)
21801	2	1-13/16	1-7/8	6,000	8
21803	3	1-13/16	1-7/8	6,000	8
21804	4	1-13/16	1-7/8	6,000	10
21805	5	1-13/16	1-7/8	6,000	13
21806	6	1-13/16	1-7/8	6,000	14



STEEL HANDLE WITH COMFORTABLE WOOD CRANK



PATENTED, QUICK-ACTION, NO-SLIP CLUTCHES

EXPERIENCE THE SHEAR DIFFERENCE

The WILTON SHR™ strut & threaded rod shear is engineered to quickly cut strut, back-to-back strut and threaded rod without the need for deburring or secondary operations. The precision machined ductile iron frame and powerful 30 ton hydraulic cylinder deliver the industrial toughness and strength needed for any job.

STRUT & THREADED ROD SHEAR

PAGE 72

BLADE SET COMPATIBILITY

PAGE 75



STRUT & THREADED ROD SHEAR



STRUT & THREADED ROD SHEAR



FEATURES

FAST & POWERFUL

- 30 Ton hydraulic cylinder shears tough materials with ease
- 3 second cut with no need for deburring or other secondary operations
- Quick coupler connects to any 10,000 psi power supply

EASY TO USE

- Quick blade set change requires no extra tools
- Shear marker notch to monitor cut lengths using standard tape measure
- Portable to move with you to wherever the work needs done
- Includes two support rods with 17" measurement scale from backstop to cut
- Support rods can be replaced with standard 1" O.D. pipe for longer shearing applications

CLEAN, DURABLE & SAFE

- No mess and no spark means increased safety and maximum productivity
- Produces clean straight cuts every time
- Precision machined ductile iron frame built to withstand rugged use

BLADE SET OPTIONS

- Standard blade set shears 1-5/8" and 13/16" strut
- Blade sets available for shearing Back-to-Back, Deep Only and Cooper B-Line® 4D21 & 4D22 strut
- Single blade set available for shearing 1/4", 3/8", 1/2" and 5/8" threaded rod

SPECS

STOCK NO.	DEEP STRUT (in.)	SHALLOW STRUT (in.)	MAX. CAPACITY	CYLINDER	CYLINDER STROKE (in.)	HYDRAULIC PRESSURE (PSI)	DIMENSIONS (L x W x H / in.)	NET WEIGHT (lbs.)
28910	1-5/8 x 1-5/8	1-5/8 x 13/16	12 Gauge Mild Steel	30 Tons	1	10,000	26-1/8 x 17-1/32 x 10-3/8	71.5



IDEAL FOR

- Electrical
- Construction
- Mechanical Contractors



POWERFUL 30 TON
HYDRAULIC CYLINDER



QUICK BLADE SET CHANGES



SHEAR MARKER NOTCH



ADJUSTABLE BACKSTOP

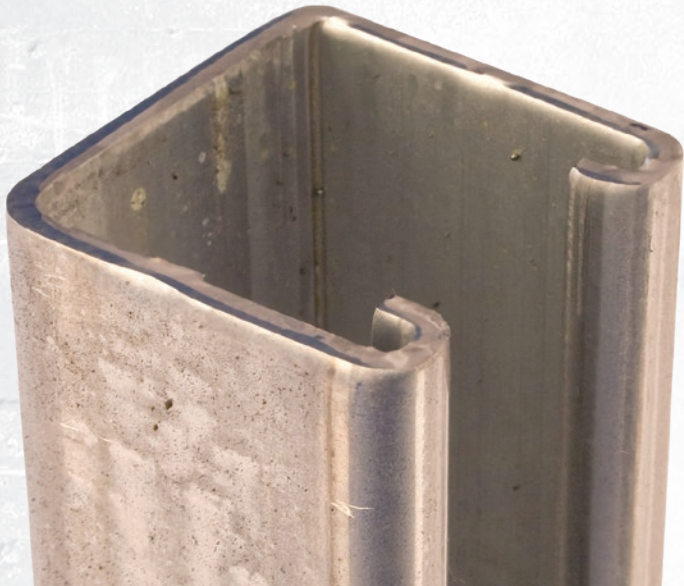
WILTON SHR™ STRUT & THREADED ROD SHEAR

CUT STRUT THE RIGHT WAY THE FIRST TIME

NO BURR OR POST PROCESSING

Save time and money! The shearing action of the WILTON SHR™ Strut & threaded Rod Shear provides a burr free cut that requires no post processing, finishing, or burr removal.

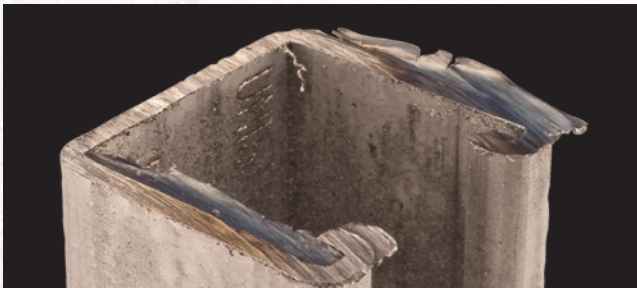
GO DIRECTLY FROM CUT TO INSTALLATION WITH THE WILTON SHR STRUT & ROD THREADED SHEAR



VS. THE COMPETITION



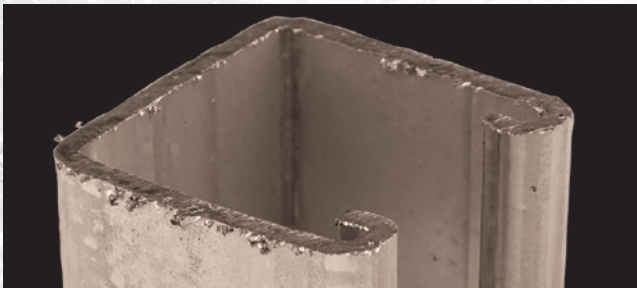
RECIPROCATING SAW



ABRASIVE SAW



PORTABAND SAW



METAL CUTTING SAW

BLADE SET COMPATIBILITY



STANDARD BLADE SET – NO. 28930
CUTS 1-5/8" x 1-5/8" and 13/16" x 1-5/8"
Included as part of 28910 SHR™ Strut & Threaded Rod Shear

AVAILABLE AS ACCESSORIES



B-LINE 4D21 SET – NO. 28931
CUTS 1-1/16" x 2-1/8"



B-LINE 4D22 SET – NO. 28932
CUTS 2-1/8" x 2-1/8"



THREADED ROD SET – NO. 28933
CUTS ROD 1/4" - 20; 3/8" - 16; 1/2" - 13 and 5/8" - 11



BACK-TO-BACK SET – NO. 28934
CUTS 1-5/8" x 3-1/4"



DEEP ONLY SET – NO. 28935
CUTS 1-5/8" x 1-5/8"

COMPATIBLE STRUT PROFILES

STOCK NO.	COMPATIBLE WITH
28930	B-Line B22, B22SH, B22S, B22H17/8, B22TH, B22S58, B24, B24SH, B24S, B24H17/8, B24TH, B24S58, B52, B52SH, B52S, B52H17/8, B52TH, B52S58, B54, B54SH, B54S, B54H17/8, B54TH, B54S58 Unistrut P1000, P1100, P1000T, P1000SL, P1000HS, P1000H3, P2000 & P4520, P4100, P4100T, P4100SL, P4100HS, P4000, PA158 Powerstrut PS 200, PS 210 & PS 560, 520, PS 500 Superstrut A-1200, A-1400 & B-1200, B-1400
28931	B-Line 4D21
28932	B-Line 4D22
28933	All Mild Steel Rod
28934	B-Line B22A, B24A, B26A Unistrut P1001, P1101, P2001 Powerstrut PS 200 2T3, PS 210 2T3 Superstrut A-1202
28935	B-Line B22, B24, B26 Unistrut P1000, P1100, P1000T, P1000SL, P1000HS, P1000H3, P2000 Powerstrut PS 200, PS 210 Superstrut A-1200, A-1400

STOCK NO.	PRODUCT DESCRIPTION
28920	WILTON SHR™ Starter Kit including Shear and Power Pack
28990	WILTON SHR™ Power Pack with 6 ft Hose



THE WORLD'S MOST DURABLE STRIKING TOOLS

SLEDGE HAMMERS
PAGE 78

BRASS HAMMERS
PAGE 80

**BALL AND CROSS
PEIN HAMMERS**
PAGE 81

**DEAD BLOW
HAMMERS**
PAGE 82

**BEAD BREAKING
WEDGE**
PAGE 83

HAMMER KITS
PAGE 84



STRIKING TOOLS



THE WORLD'S MOST DURABLE STRIKING TOOLS

A

UNBREAKABLE® HANDLE TECHNOLOGY

- STEEL CORE DESIGN PREVENTS BREAKING DURING OVERSTRIKES

B

SAFETY PLATE

- LOCKS HEAD FIRMLY TO HANDLE, ELIMINATING DISLODGING

C

NO-SLIP GRIP

- TEXTURED HANDLE FOR SECURE GRIP WHILE STRIKING

D

TRADEMARK GREEN HEAD

- HI-VIS, DROP-FORGED 46 HRC HEAD ENDURES THE MOST DEMANDING APPLICATIONS AND ADDS INSTANT IDENTIFICATION



FLAT HEAD
CONVENIENTLY DESIGNED TO
STAND UPRIGHT FOR EASY REACH



ANTI-VIBE NECK
ERGONOMICALLY DESIGNED TO
PREVENT INJURY FROM REPEATED JOB
SITE USE



LANYARD HOLE
SAFELY SECURE SLEDGE HAMMER
TO YOUR WRIST

**25,000+
OVERSTRIKES
BEFORE THE HANDLE BREAKS**

B.A.S.H.[®] SLEDGE HAMMERS



SPECS

STOCK NO.	HEAD SIZE (lbs.)	HANDLE SIZE (in.)	NET WEIGHT (lbs.)
B.A.S.H. [®] SLEDGE HAMMERS (46 HRC)			
20212	2-1/2	12	4
20412	4	12	5
20416	4	16	6
20424	4	24	6
20616	6	16	8
20624	6	24	9
20630	6	30	10
20636	6	36	11
20816	8	16	11
20824	8	24	11
20830	8	30	12
20836	8	36	13

STOCK NO.	HEAD SIZE (lbs.)	HANDLE SIZE (in.)	NET WEIGHT (lbs.)
21016	10	16	13
21024	10	24	13
21030	10	30	15
21036	10	36	15
21224	12	24	16
21230	12	30	17
21236	12	36	18
21424	14	24	18
21430	14	30	19
21436	14	36	20
22024	20	24	24
22030	20	30	25
22036	20	36	27

STOCK NO.	HEAD SIZE (lbs.)	HANDLE SIZE (in.)	NET WEIGHT (lbs.)
B.A.S.H. [®] SOFT FACE SLEDGE HAMMERS (30 HRC)			
21016	10	16	13
21024	10	24	13
21030	10	30	15
21036	10	36	15
21224	12	24	16
21230	12	30	17
21236	12	36	18
21424	14	24	18
21430	14	30	19
21436	14	36	20
22024	20	24	24
22030	20	30	25
22036	20	36	27

FEATURES

UNBREAKABLE[®] HANDLE TECHNOLOGY:

- Steel core eliminates breaking during overstrikes

TRADEMARK GREEN HEAD:

- Patented hi-vis, drop-forged 46 HRC head endures the most demanding applications*

*Excludes 30 HRC Soft-face models

SAFETY PLATE:

- Secures head to handle, preventing head from dislodging

ANTI-VIBE NECK:

- Thick, tapered neck absorbs vibration, reducing worker fatigue

NO-SLIP GRIP:

- Vulcanized rubber handle for secure grip while striking

LANYARD HOLE:

- Safely secure hammer to wrist or stationary object

IDEAL FOR

STANDARD HAMMERS

- Demolition Work
- Fracturing Stone and Concrete
- Driving Fence Posts
- Police, Fire & Rescue

SOFT FACE HAMMERS

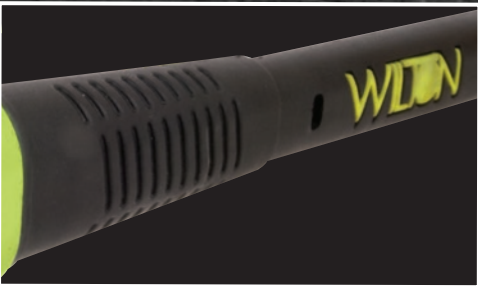
- Maintenance on hard metal surfaces
- Mining
- Cutting Tools



UNBREAKABLE[®] HANDLE TECHNOLOGY



SAFETY PLATE



ANTI-VIBE NECK



B.A.S.H.[®] BRASS SLEDGE HAMMERS

FEATURES

UNBREAKABLE[®] HANDLE TECHNOLOGY:

- Steel core eliminates breaking during overstrikes

BRASS HEAD:

- Non-sparking for use near combustible materials and non-marring to reduce work damage

SAFETY PLATE:

- Secures head to handle, preventing head from dislodging

ANTI-VIBE NECK:

- Thick, tapered neck absorbs vibration, reducing worker fatigue

NO-SLIP GRIP:

- Vulcanized rubber handle for secure grip while striking

LANYARD HOLE:

- Safely secure hammer to wrist or stationary object

IDEAL FOR

- Use near combustible materials
- Where surface protection is required
- Oil & gas
- Mining
- Aerospace



SPECS

STOCK NO.	HEAD SIZE (lbs.)	HANDLE SIZE (in.)	NET WEIGHT (lbs.)
90212	2.5	12	4
90412	4	12	5
90416	4	16	6
90616	6	16	8
90816	8	16	10
90830	8	30	12



UNBREAKABLE[®]
HANDLE TECHNOLOGY



SAFETY PLATE



ANTI-VIBE NECK



NON-SPARKING BRASS
HEAD

B.A.S.H.[®] BALL & CROSS PEIN HAMMERS

FEATURES

UNBREAKABLE[®] HANDLE TECHNOLOGY:

- Steel core eliminates breaking during overstrikes

SAFETY PLATE:

- Secures head to handle, preventing head from dislodging

ANTI-VIBE NECK:

- Thick, tapered neck absorbs vibration, reducing worker fatigue

NO-SLIP GRIP:

- Vulcanized rubber handle for secure grip while striking

TRADEMARK GREEN HEAD:

- Patented hi-vis, drop-forged 46 HRC head endures the most demanding applications

LANYARD HOLE:

- Safely secure hammer to wrist or stationary object

IDEAL FOR

- Light Forging
- Bending
- Forming
- Peining



BALL PEIN

CROSS PEIN

SPECS

STOCK NO.	HEAD SIZE (lbs.)	HANDLE SIZE (in.)	NET WEIGHT (lbs.)
B.A.S.H. [®] BALL PEIN HAMMERS			
32414	24	14	2
33214	32	14	3
34014	40	14	3
B.A.S.H. [®] CROSS PEIN HAMMERS			
30216	24	16	3
30316	32	16	4



UNBREAKABLE[®]
HANDLE TECHNOLOGY



SAFETY PLATE



ANTI-VIBE NECK

B.A.S.H.[®] DEAD BLOW HAMMERS

FEATURES

DEAD BLOW:

- Eliminates bounce-back when striking hardened surfaces

SPARK-RESISTANT:

- Safe for use near combustible materials - no exposed metal on face, head or shaft

SOFT FACE:

- Helps prevent marring

UNBREAKABLE[®] HANDLE TECHNOLOGY:

- Steel core eliminates breaking during overstrikes

ERGONOMIC HANDLE:

- Shaped and thickened for improved comfort and less vibration

NO-SLIP GRIP:

- Vulcanized rubber handle for secure grip while striking

LANYARD HOLE:

- Safely secure hammer to wrist or stationary object

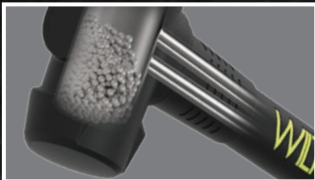
IDEAL FOR

- Automotive
- Metal Fabrication
- Oil and Mining
- Wood and Metal Assembly
- Aerospace Industry



SPECS

STOCK NO.	HEAD SIZE (lbs.)	HANDLE SIZE (in.)	NET WEIGHT (lbs.)
55114	1-1/2	14	4
55214	2	14	5
55314	3	14	6
55416	4	16	8
55830	8	30	10



UNBREAKABLE[®] HANDLE TECHNOLOGY



SOFT FACE



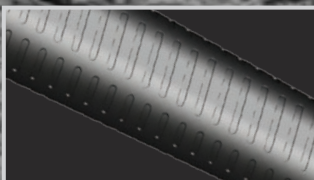
SPARK-RESISTANT



UNBREAKABLE[®] HANDLE TECHNOLOGY



SAFETY PLATE



NO-SLIP GRIP

B.A.S.H.[®] BEAD BREAKING WEDGE

FEATURES

- The world's most durable bead breaking wedges are designed for heavy-duty use in removing tires from rims. And like all B.A.S.H. tools, our bead breaking wedges feature Unbreakable Handle Technology, a safety plate to secure the head, a no-slip grip, an anti-vibe neck and the B.A.S.H. trademark green head.

UNBREAKABLE[®] HANDLE TECHNOLOGY:

- Steel core design prevents breaking during overstrikes

SAFETY PLATE:

- Locks head firmly to handle, eliminating dislodging

NO-SLIP GRIP:

- Textured handle for secure grip while in use

IDEAL FOR

- Heavy Truck
- Farm & Ag

SPECS

STOCK NO.	HEAD SIZE (lbs.)	HANDLE SIZE (in.)	NET WEIGHT (lbs.)
51136	11	36	11



WILSON

B.A.S.H.[®] HAMMER KITS

B.A.S.H 8 PC. MASTER HAMMER KIT

11108

STOCK NO.	DESCRIPTION	QTY.
11108	B.A.S.H 8 pc. Master Hammer Kit	1
KIT CONTENTS		
20212	2-1/2 lb. Head, 12" B.A.S.H [®] Sledge Hammer	1
20412	4 lb. Head, 12" B.A.S.H [®] Sledge Hammer	1
55114	1-1/2 lb. Head, 14" B.A.S.H [®] Dead Blow Hammer	1
55214	2 lb. Head, 14" B.A.S.H [®] Dead Blow Hammer	1
30216	2 lb. Head, 16" B.A.S.H [®] Cross Pein Hammer	1
32414	24 oz. Head, 14" B.A.S.H [®] Ball Pein Hammer	1
33214	32 oz. Head, 14" B.A.S.H [®] Ball Pein Hammer	1
34014	40 oz. Head, 14" B.A.S.H [®] Ball Pein Hammer	1

B.A.S.H 6 PC. MASTER HAMMER KIT

11109

STOCK NO.	DESCRIPTION	QTY.
11109	B.A.S.H 6 pc. Master Hammer Kit	1
KIT CONTENTS		
20212	2-1/2 lb. Head, 12" B.A.S.H [®] Sledge Hammer	1
20412	4 lb. Head, 12" B.A.S.H [®] Sledge Hammer	1
55114	1-1/2 lb. Head, 14" B.A.S.H [®] Dead Blow Hammer	1
55214	2 lb. Head, 14" B.A.S.H [®] Dead Blow Hammer	1
30216	2 lb. Head, 16" B.A.S.H [®] Cross Pein Hammer	1
32414	24 oz. Head, 14" B.A.S.H [®] Ball Pein Hammer	1



B.A.S.H BALL PEIN HAMMER KIT

11110

STOCK NO.	DESCRIPTION	QTY.
11110	B.A.S.H Ball Pein Hammer Kit	1
KIT CONTENTS		
32414	24 oz. Head, 14" B.A.S.H [®] Ball Pein Hammer	1
33214	32 oz. Head, 14" B.A.S.H [®] Ball Pein Hammer	1
34014	40 oz. Head, 14" B.A.S.H [®] Ball Pein Hammer	1



B.A.S.H MECHANICS HAMMER KIT

11111

STOCK NO.	DESCRIPTION	QTY.
11111	B.A.S.H Mechanics Hammer Kit	1
KIT CONTENTS		
20412	4 lb. Head, 12" Handle B.A.S.H [®] Sledge Hammer	1
33214	32 oz. Head, 14" Handle B.A.S.H [®] Ball Pein Hammer	1
30216	2 lb. Head, 16" Handle B.A.S.H [®] Cross Pein Hammer	1



B.A.S.H SHOP HAMMER KIT

11112

STOCK NO.	DESCRIPTION	QTY.
11112	B.A.S.H Shop Hammer Kit	1
KIT CONTENTS		
20412	4 lb. Head, 12" Handle B.A.S.H [®] Sledge Hammer	1
33214	32 oz. Head, 14" Handle B.A.S.H [®] Ball Pein Hammer	1
55416	4 lb. Head, 16" Handle B.A.S.H [®] Dead Blow Hammer	1



B.A.S.H DEAD BLOW HAMMER KIT

11113

STOCK NO.	DESCRIPTION	QTY.
11113	B.A.S.H Dead Blow Hammer Kit	1
KIT CONTENTS		
55214	2 lb. Head, 14" Handle B.A.S.H [®] Dead Blow Hammer	1
55314	3 lb. Head, 14" Handle B.A.S.H [®] Dead Blow Hammer	1
55416	4 lb. Head, 16" Handle B.A.S.H [®] Dead Blow Hammer	1



WILTON[®]

STOCK NO. 19-00710 2/2020

JPW
INDUSTRIES



HOLDING STRONG SINCE 1941